

Tāmaki Makaurau Auckland Product Directory



Contents

P4

Accommodation

Airedale Boutique Suites
Cophthorne Hotel Auckland City
Cordis Auckland
Crowne Plaza Auckland
Delamore Lodge
Fable Auckland
Four Points by Sheraton Auckland
Grand Millennium Auckland
Greenlane Suites Auckland
Heartland Hotel Auckland Airport
Heritage Auckland
Hilton Auckland
Holiday Inn Auckland Airport
Horizon by SkyCity
Hotel DeBrett
Hotel Fitzroy Curated by Fable
ibis Auckland Ellerslie
ibis Budget Auckland Central
ibis Budget Auckland Airport
InterContinental Auckland
JW Marriott Auckland
M Social Auckland
Mövenpick Hotel Auckland
Novotel Auckland Ellerslie
Novotel Auckland Airport
Park Hyatt Auckland
President Hotel Auckland
Pullman Auckland Airport
Pullman Auckland Hotel & Apartments
QT Auckland
Rydges Auckland
Rydges Formosa Golf Resort
SkyCity Hotel
SO/ Auckland
Sofitel Auckland Viaduct Harbour
Sudima Auckland Airport
Sudima Auckland City
The Grand by SkyCity
The Hotel Britomart
The Sebel Auckland Manukau
The Sebel Auckland Viaduct Harbour
The Sebel Quay West Auckland
Whangaparaoa Lodge
Woodhouse Mountain Lodge

P20

Activities and Attractions

AJ Hackett Bungy New Zealand
All Blacks Experience
Auckland Art Gallery
Auckland Museum
Auckland Sea Kayaks
Auckland Zoo
Aucky Walky Tours
Brick Bay Wines & Sculpture Trail
EcoZip Adventures
Explore Group New Zealand
Great Journeys New Zealand
Matakana Village
New Zealand Maritime Museum
Power to the Pedal
SEA LIFE Kelly Tarlton's Aquarium
Sky Tower
Te Arai Links
The Heke – Kitchen, Brewery and Distillery
Thrillzone / Escape Quest
Waiheke Distilling Co.
Westfield Newmarket
Wētā Workshop Unleashed

P29

Tours

Ananda Tours
Auckland & Beyond Tours
Bush and Beach
Kiwi Connect NZ
Terra and Tide
The Big Foody Food Tours
TIME Unlimited Tours

P33

Transport

Boss Black Ltd
Cruise New Zealand
Fullers360
GO Rentals
Heletranz Helicopters
Island Aviation

P36

Useful Information

Tāmaki Makaurau Auckland

Discover Auckland, New Zealand's largest and most diverse city, where sparkling waters, lush landscapes and city sophistication converge. World-class dining, shopping and luxurious accommodation are all within reach of water adventures on the Hauraki Gulf.

Immerse yourself in activities from sailing and island exploration to urban walks and native forest trails. Hike a volcanic cone for city-wide views, savour local award-winning wines, and take time to discover the beauty of Waiheke Island and Matakana Coast. Experience captivating performances, museums and art, connecting with the region's rich history, natural beauty and distinctive urban culture.

We invite you to experience and discover Tāmaki Makaurau Auckland. Connect with our people, our land, and the stories that have shaped our place.

Fun facts



In New Zealand's indigenous Māori language, Auckland is called Tāmaki Makaurau which means a 'place desired by many.'



Auckland's landscape is dotted with **53 volcanic cones**. The largest, youngest and most iconic is Rangitoto Island, which emerged from the water approximately 650 years ago.



Auckland is home to about **1.7 million people** – more than a third of New Zealand's population.



One of the few cities in the world bordered by **three harbours on two separate bodies of water** – The Pacific Ocean on the east coast and the Tasman Sea on the west coast.



Westhaven Marina, on the city's doorstep, is the **largest marina in the Southern Hemisphere**.



The Hauraki Gulf Marine Park encompasses an incredible area of **1.2 million hectares and more than 50 islands**. Many islands are easily accessible by ferry from downtown Auckland, including Waiheke Island, Rangitoto Island and Tiritiri Matangi Island.

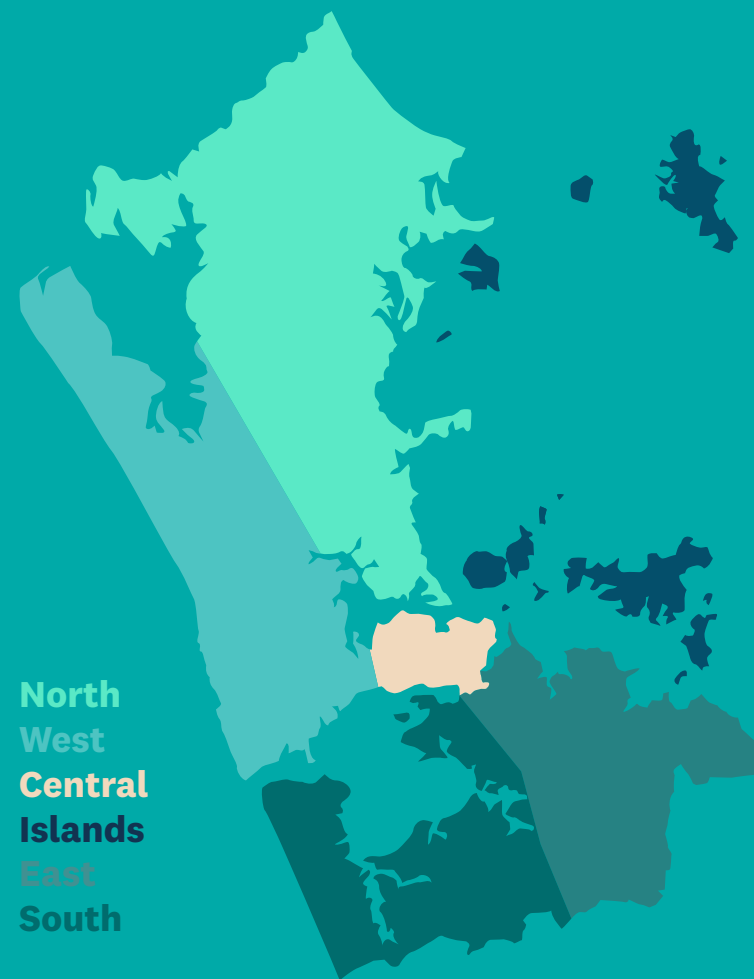


Auckland is fortunate to enjoy one of the most diverse and unique music scenes in the world – so much so, that it's officially a '**UNESCO City Of Music**'.



Accommodation

Auckland's diverse accommodation ranges from international hotel brands and self-contained apartments to boutique lodges to suit any budget.



North
West
Central
Islands
East
South

Airedale Boutique Suites



Auckland City Centre



- 380 Queen Street, Auckland 1010
- +64 9 374 1741
- AiredaleBoutiqueSuites@scenicgroup.co.nz
- www.scenichotelgroup.co.nz/auckland/airedale-boutique-suites



Airedale Boutique Suites, on Queen Street in the heart of Auckland's theatre district, has undergone an extensive refurbishment, from the interior rooms, to public spaces and through to the restoration of the heritage facade.

This Auckland hotel embraces the history of this iconic Queen Street building to create something unique and authentic, combining the flair of art deco architecture with modern style and comfort.

Airedale is the newest member of the Legacy Collection, the Scenic Hotel Group's collection of unique, premium properties; each with their own story to share and their own legacy to leave.

Copthorne Hotel Auckland City



Auckland City Centre



- 150 Anzac Avenue, Auckland 1010
- +64 9 379 8509
- copthorne.aucklandcity@millenniumhotels.co.nz
- www.millenniumhotels.com/en/auckland/copthorne-hotel-auckland-city



Simple, sophisticated, and designed for comfort. Copthorne Hotel Auckland City is centrally located, making it the perfect base to explore the city or attend conferences. Nearby you'll find Queen Street shopping, the Central Business District, and University of Auckland. The hotel is just a 10-minute walk away from the Viaduct Basin and Spark Arena.

All guest rooms and suites are equipped with soundproof 'hush windows' designed to ensure the utmost in privacy and comfort. Enjoy the beautiful seascape or city view from the in-room balconies.

Cordis, Auckland



Auckland City Centre



- 83 Symonds Street, Auckland 1010
- +64 9 300 2868 or 0800 0 CORDIS
- cdakl.resv@cordishotels.com
- www.cordishotels.com/auckland



Cordis, Auckland is an elegant 5-star luxury hotel that offers 640 modern rooms and suites with the addition of the new Pinnacle Tower and features the Club Lounge. The hotel has 18 versatile event spaces offering the latest high-tech audio-visual solutions. Eight Restaurant, Chandelier Lounge and Our Land is Alive bar provide stylish places to dine and socialise, while the tranquil Chuan Spa is the perfect urban retreat. The Health Club has top-of-the-range Technogym equipment, a spa pool and a heated pool. Toast the sunset with your favourite cocktails and snacks during the summer months at the poolside bar.

Crowne Plaza Auckland

Auckland City Centre

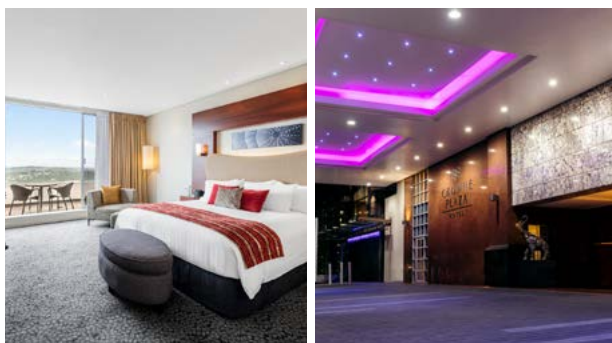
 352

 128 Albert Street, Auckland 1010

 +64 9 302 1111

 reservations.cpa@ihg.com

 <https://auckland.crowneplaza.com>



Discover the ultimate destination for stays and gatherings in New Zealand's largest city – Crowne Plaza Auckland. Situated in the city centre, a brief walk from premier shopping, dining, and entertainment venues, its location is unparalleled.

From intimate gatherings to extensive conferences, the adept team ensures seamless events exceeding expectations. The 10 adaptable meeting spaces accommodate groups of five to 400, catering to events of any scale and style.

Guests can unwind in 352 expansive hotel rooms, spanning from Standard to Luxury Suites, meeting diverse accommodation preferences.

Whether the visit is business, leisure, or a fusion, Crowne Plaza Auckland offers an optimal blend of comfort, service, and unparalleled convenience.

Welcome to Crowne Plaza Auckland, where memorable experiences await.

Delamore Lodge

Waikeke Island

 6

 83 Delamore Drive, Oneroa, Waiheke Island 1081

 +64 9 372 7372

 reservations@delamorelodge.com

 www.delamorelodge.com



A luxurious lodge on Auckland's Waiheke Island – the jewel in Auckland's stunning Hauraki Gulf. Just a 35-minute ferry ride or 5 minute helicopter flight from downtown Auckland, Waiheke is a favourite destination for lovers of luxury travel.

Delamore Lodge is built cliffside with commanding views overlooking Owhanake Bay, superior facilities, first-class service and delicious dining. Inspired by the Mediterranean with a unique New Zealand flavour, this elegant and exclusive luxury lodge is designed in the shape of a traditional Maori fish hook (Matau) and is literally moulded into the hillside.

Fable Auckland




Auckland City Centre

 79

 56-60 Queen Street, Auckland 1010

 +64 9 309 9979

 reservations@fableauckland.com

 www.fablehotelsandresorts.com/hotels/fable-auckland



Located on lower Queen Street in the heart of the city, Fable Auckland, an MGallery property offers a prime location, accommodation, and service the city has to offer. On arrival, enjoy Fable's signature welcome tea and concierge services for your bags. Boasting valet parking, free unlimited Wi-Fi, room service, working desks and Nespresso coffee machines.

Lavishly designed and hinting at old world charm, Fable Auckland, MGallery features beautifully appointed and spacious guest rooms and suites, with luxurious bedding and state-of-the-art technology. Cooke's Restaurant & Bar, serving international cuisine. Indulge in wellbeing facilities including a hot tub, sauna and fitness room.

Accommodation

Activities & Attractions

Tours

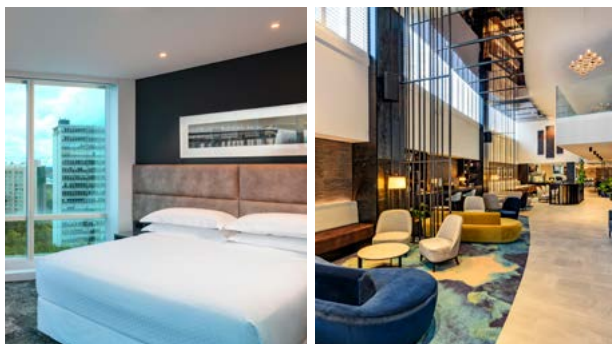
Transport

Four Points by Sheraton Auckland

Auckland City Centre

 255

-  396 Queen Street, Auckland
-  +64 9 393 8240
-  fourpoints.auckland@fourpoints.com
-  www.marriott.com/en-us/hotels/aklfp-four-points-auckland/overview





Indulge in exceptional service and spacious accommodations at Four Points by Sheraton Auckland, situated in the lively Aotea Arts Quarter. Just steps from Aotea Square, The Civic, and other cultural landmarks, the hotel provides modern rooms and suites with signature bedding and stunning views of the city. Suites feature separate living areas and balconies, catering to families, special occasions, or work trips. Stay connected with free Wi-Fi, maintain fitness in the 24-hour gym, and savor dining options at the Queen's Head Bar & Eatery or The Churchill, Auckland's luxury rooftop gin and cocktail bar situated on the 20th floor.

Grand Millennium Auckland

Auckland City Centre



 452

-  71 Mayoral Drive, Corner Vincent Street, Auckland
-  +64 9 366 3000
-  central.reservations@millenniumhotels.co.nz
-  www.millenniumhotels.com/en/auckland/grand-millennium-auckland



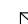



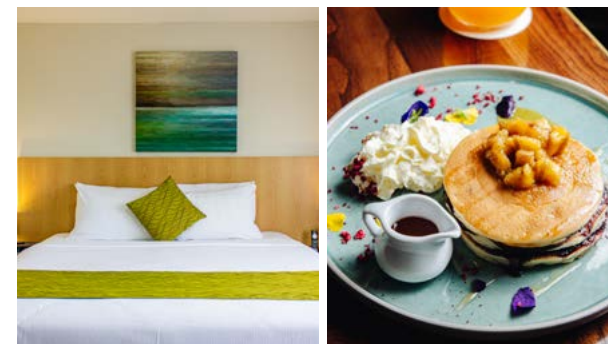
Grand Millennium Auckland, superbly located in the city centre close to Queen Street and Viaduct Harbour. Whether travelling for business or leisure, you will appreciate being situated in the very heart of cosmopolitan Auckland with some of the city's finest dining, shopping and entertainment venues at your doorstep. Also nearby are landmark venues: The Civic, Auckland Town Hall and Aotea Square, the city's largest outdoor civic space where you can relax and often attend local events.

Greenlane Suites Auckland

Greenlane

 25

-  149 Great South Road, Greenlane, Auckland 1051
-  +64 9 529 4106
-  reservations@greenlanesuites.com
-  www.cpghotels.com/hotels/greenlane-suites



Situated in the city-fringe suburb of Greenlane, just minutes from motorway links, Ellerslie Convention Centre and ASB Showgrounds, the contemporary accommodation is convenient and comfortable.

With a wealth of Auckland entertainment, recreational and adventure activities just a short drive away, Greenlane Suites provides exceptional value for money accommodation with a range of options to suit both the leisure and business traveler.

Heartland Hotel Auckland Airport



Auckland Airport

141

14 Airpark Drive, Airport Oaks, Auckland 2022

+64 9 275 4540

airportrm@heartlandhotels.co.nz

www.scenichotelgroup.co.nz/auckland/heartland-hotel-auckland-airport



Heartland Hotel Auckland Airport is located just 3 kilometres from Auckland Airport and within close proximity to downtown Auckland and the vibrant Manukau City, making it a great place to base yourself if you are travelling on business or visiting Auckland for leisure. The complimentary 24/7 airport shuttle can pick your clients up from the airport or drop off at either the domestic or international terminals. Short and long term car parking is also available.

Heritage Auckland

Auckland City Centre

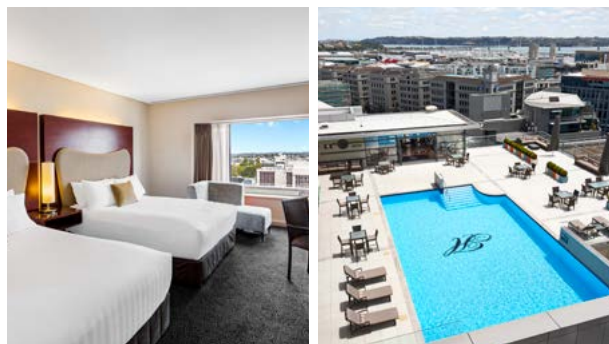
167

35 Hobson Street, Auckland 1010

+64 9 379 8553

res.heritageakl@heritagehotels.co.nz

www.heritagehotels.co.nz/heritage-auckland



Heritage Hotel Auckland is recognised as a top-tier, resort-style accommodation in Auckland. Housed within the historical landmark of the Farmers Department store, it proudly operates one of the city's most well-known hotels. Guests can choose from a diverse range of accommodation options and conference facilities. For relaxation, visitors can enjoy a dip in one of the hotel's pools (rooftop and indoor lap), make use of multiple gyms, play tennis on-site, or dine at the international restaurant.

Hilton Auckland

Auckland City Centre

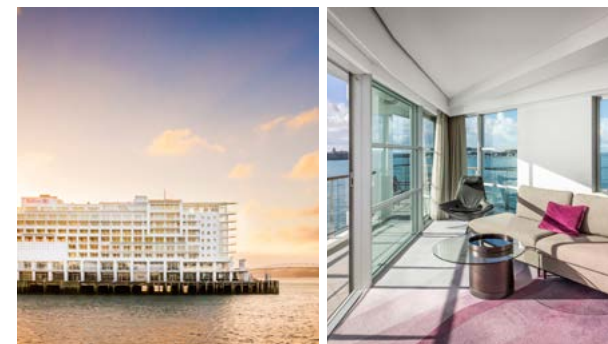
197

147 Quay Street, Princes Wharf, Auckland 1010

+64 9 978 2000

reservations.auckland@hilton.com

www.hilton.com/en/hotels/aklhihi-hilton-auckland



This nautically-inspired hotel sits on the end of Princes Wharf, home to a wide variety of fine shops, restaurants, and bars. The seven meeting rooms feature natural light and open decks with views over the water. The restaurant is available for private events, and a multi-purpose space that can accommodate up to 750 guests. Get a unique view of the harbour through the outdoor lap pool's underwater viewing window.

Holiday Inn Auckland Airport



Auckland Airport

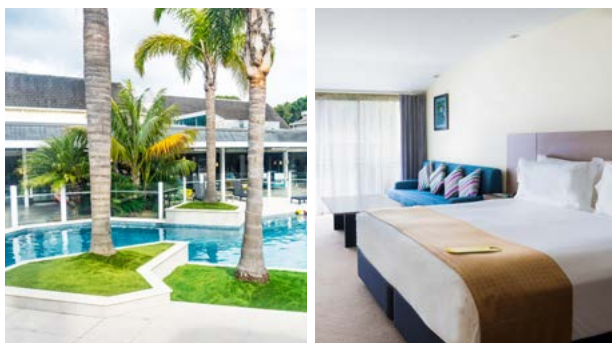
251

2 Ascot Road, Airport Oaks, Auckland 2150

+64 9 275 1059

reservations.hiaucklandairport@ihg.com

www.aucklandairport.holidayinn.com



Just minutes away from Auckland Airport terminals and tucked away from road noise and flight paths, there is no better place to relax before an early morning flight or layover than the Holiday Inn Auckland Airport.

Holiday Inn Auckland Airport is a 4-star Qualmark rated hotel with 251 guestrooms. Each guestroom is designed to provide a stylish, spacious and functional environment for travelers.

Horizon by SkyCity



Auckland City Centre

303

85 Hobson Street, Auckland

+64 9 363 6000

info@horizonbyskycity.co.nz

<https://horizonbyskycity.skycityauckland.co.nz>



In the heart of the city, Horizon by SkyCity offers a five-star experience.

Looking out, you'll get lost in views of one of the world's most liveable cities, where cityscapes turn to landscapes in seconds. While inside, hints of Aotearoa can be found in every corner of your spacious room, from locally crafted furnishings, through to fresh New Zealand milk in the fridge.

Whether you're taking care of business or taking care of you, you'll find convenience, connection and comfort are all high on the menu. Conveniently connected to the SkyCity precinct and New Zealand International Convention Centre by airbridge, providing easy access to vibrant entertainment, attractions and award-winning dining options.

Carefully considered, and designed with you in mind, here is your oasis of discovery, with touches of luxury at every turn.

Horizon by SkyCity. Where today meets tomorrow.

Hotel DeBrett

Auckland City Centre

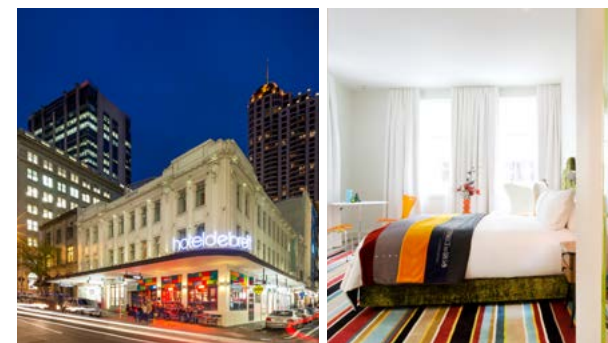
24

2 High Street, Auckland 1010

+64 9 925 9000

reservations@hoteldebrett.com

<https://hoteldebrett.com>



Located within the old-world charm of Auckland's High Street – just minutes from the bustle of Britomart, lower Queen Street and Auckland's iconic waterfront – lies the delightfully Art Deco styled Hotel DeBrett. The boutique Auckland hotel is home to 24 rooms – each with a distinct personality – a chic mix of mid-century modern furniture and New Zealand art, fused with contemporary comforts designed to tickle the senses.

Accommodation

Activities & Attractions

Tours

Transport

Hotel Fitzroy Curated by Fable



Ponsonby

10

- 43 Richmond road, Grey Lynn, Auckland 1021
- +64 21 911 093
- reservations@hotelfitzroy.co.nz
- www.fablehotelsandresorts.com/hotels/hotel-fitzroy



Hotel Fitzroy curated by Fable is a carefully restored landmark villa where indulgent treats like cocktails and hors d'oeuvres in the library, breakfast in bed and quiet relaxation are all part of the experience. Beautifully designed superior and luxury rooms cater to your every whim, while our discreet hosts can curate your perfect Ponsonby experience.

ibis Auckland Ellerslie



Ellerslie

100

- 72-112 Greenlane East, Auckland
- +64 9 529 9090
- h3060-re2@accor.com
- <https://all.accor.com/hotel/3059/index.en.shtml>



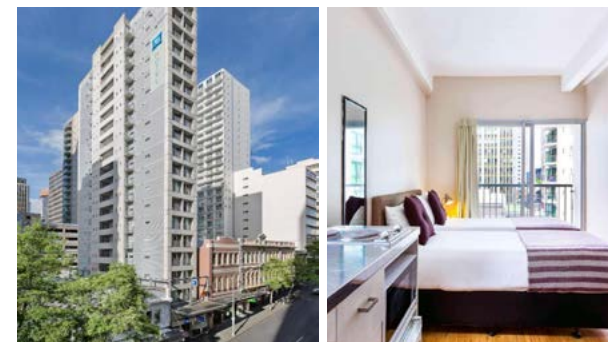
Stay close to the city with easy motorway and rail access. Featuring 100 modern accommodation rooms, gymnasium, restaurant, outdoor garden bar and adjacent to Novotel Auckland Ellerslie with 4.5 star facilities.

ibis Budget Auckland Central

Auckland City Centre

144

- 20 Wyndham Street, Auckland
- +64 9 308 9140
- h6487-fo@accor.com
- <https://all.accor.com/hotel/6487/index.en.shtml>



Smart choice economy hotel, open to everyday adventurers. A sensational location just off Queen Street, right amongst Auckland city's vibrant and active social scene. Providing guests with easy access to many of the best restaurants, bars and shops, as well as attractions including Sky City Entertainment complex, Viaduct Harbour and the Britomart precinct.

With its 144 great value rooms featuring balconies and some with kitchenette facilities, ibis Budget Auckland Central offers affordable compact comfort.

ibis Budget Auckland Airport



Auckland Airport

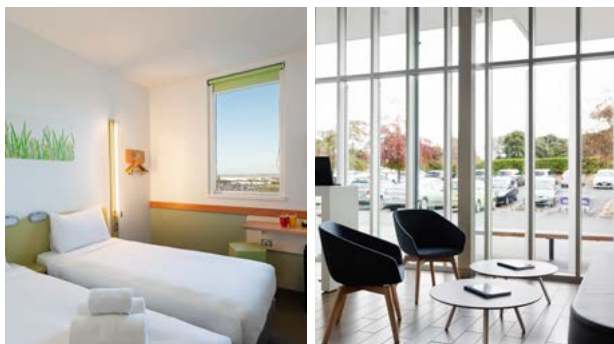
198

2 Leonard Isitt Drive, Auckland Airport

+64 9 255 5152

H7865-RE@accor.com

<https://all.accor.com/hotel/7865/index.en.shtml>



Smart choice economy hotel, open to everyday adventurers.

ibis budget Auckland Airport is the economy option in the airport vicinity which boasts all the essentials for a short stopover. Featuring black-out blinds, 24hr reception, complimentary onsite parking and airport shuttle (charge apply).

With 198 bright, modern rooms and a fun, urban design, ibis budget Auckland Airport Hotel offers value and convenience for every traveller.

Located only minutes away from Auckland domestic & international terminals, and 20 minutes from the city, avoid the last-minute rush and stress of travel - sleep longer and save more.

InterContinental Auckland



Auckland City Centre

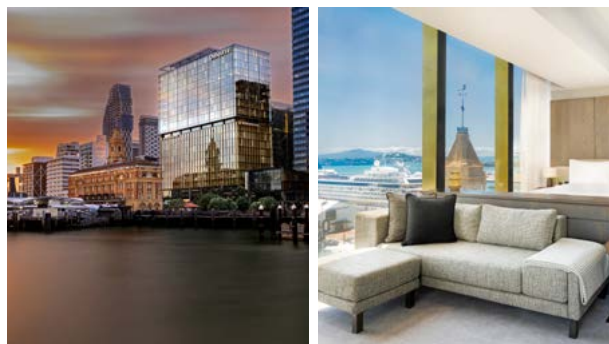
139

1 Queen Street, Auckland 1010

+64 27 368 9202

reservations.icauckland@ihg.com

www.auckland.intercontinental.com



Settled where the city meets the sails with windows to the Waitematā, unwind in the sanctuary of our guest rooms and explore the city centre at InterContinental Auckland. A luxury haven overlooking the Harbour, immerse yourself in the rich history, connect with the tapestry of local culture, art, and cuisine, or indulge at Commercial Bay's captivating retail and dining precinct. Awaken your spirit with new perspectives at InterContinental Auckland. The hotel resides in Auckland's most premium lifestyle destination, Commercial Bay. The precinct hosts over 120 unique dining and shopping experiences.

JW Marriott Auckland



Auckland City Centre

286

22-26 Albert Street, Auckland Central 1010

+64 9 309 8888

reservations.auckland@jwmarriott.com

www.jwmarriottauckland.com



Discover modern luxury at JW Marriott Auckland, where wellbeing principles converge with enriching experiences in the vibrant heart of Auckland. Our 286 rooms and suites, featuring brand-new JW beds, offer stunning views of the city. Immerse yourself in warm, genuine hospitality, revitalizing mind, body, and spirit. Indulge in delightful meals at JW Kitchen and enjoy cocktails at JW Lounge & Bar. With 324 sqm of conference space, bathed in natural daylight, and easy access to Auckland's attractions, we cater to mindful events. Explore Britomart for shopping, stroll to Viaduct Basin and Wynyard District for dining.

Accommodation

Activities & Attractions

Tours

Transport

M Social Auckland



Auckland City Centre

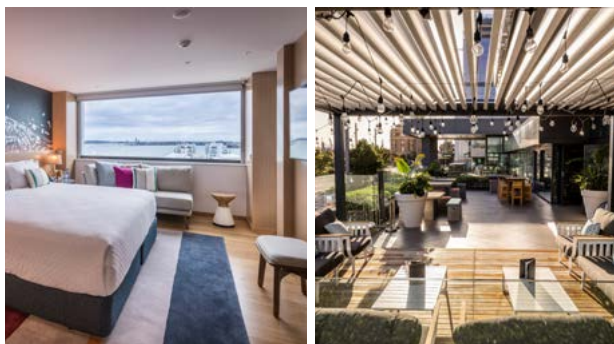
190

196 - 200 Quay Street, Auckland 1010

+64 9 377 0349

res@msocial.co.nz

www.millenniumhotels.com/en/auckland/m-social-auckland/



A contemporary hotel for the curious, the explorers and those who thrive on new experiences. Functionally chic, this contemporary hotel features 190 rooms and suites designed for all travellers, overlooking the vibrant Princes Wharf that is home to a stunning array of dining, entertainment and shopping experiences. Treat yourself to some of the best cuisine from around the world at 'Beast & Butterflies' - M Social's signature restaurant. Catch up with friends - both old and new - over a drink at the Beast & Butterflies bar.

Mövenpick Hotel Auckland

Auckland City Centre

207

8 Customs Street East, Auckland

+64 9 377 8920

h1721-re1@accor.com

<https://movenpick.accor.com/en/australia-pacific/new-zealand/auckland/hotel-auckland.html>



Mövenpick Hotel Auckland, conveniently situated in the heart of Auckland's city centre and across from Commercial Bay, offers easy access to Britomart and the Viaduct Harbour, both just a two-minute walk away. The globally renowned brand, celebrated for its inviting hospitality and distinctive culinary expertise, ensures guests enjoy an indulgent stay with the distinctive Mövenpick touch.

Novotel Auckland Ellerslie



Ellerslie

147

72-112 Greenlane East, Auckland

+64 9 529 9090

h3060-re2@accor.com

<https://all.accor.com/hotel/3060/index.en.shtml>



Novotel Auckland Ellerslie is conveniently located between the airport and the city centre - making it an ideal hotel option for business travellers, or those wanting to stay away from the busy city while remaining close to local attractions and amenities. Ellerslie, just a short drive from Auckland city and Auckland Harbour, Go Media Stadium, Sylvia Park Shopping Centre and Spark Arena, and a range of high street shopping precincts.

Enjoy access to fully-equipped fitness centre, stylish bar with big screens, and modern restaurant with indoor and al fresco dining in a tranquil garden.

Novotel Auckland Airport



Auckland Airport

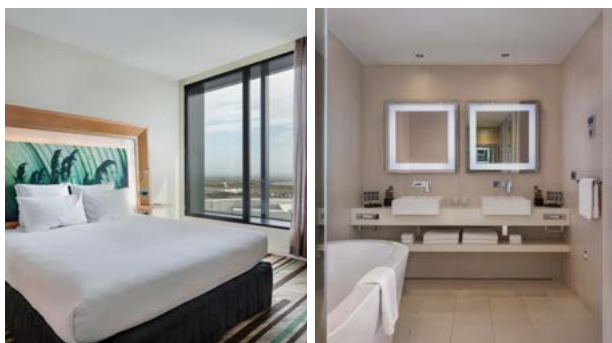
263

Auckland International Airport,
Ray Emery Drive, Auckland 2022

+64 9 257 7200

h7485-re1@accor.com

<https://all.accor.com/hotel/7485/index.en.shtml>



Enjoy 4.5 star comfort and convenience at Novotel Auckland Airport, located at the doorstep of the International terminal. Full-length soundproof windows give your stylish room natural light plus peace and quiet. Experience THIRTEEN50 Bistro & Bar, a modern open space that welcomes both hotel guests and local visitors. Touches of tradition blend naturally with contemporary flair to create a space that evokes classic Kiwi fare with a twist of local, fresh and comfort.

Located outside the international terminal, Novotel Auckland Airport Hotel takes the stress out of layovers and business trips while offering the highest standard in comfort and hotel amenities.

Park Hyatt Auckland



Auckland City Centre

195

99 Halsey Street, Auckland 1010

+64 9 366 1234

auckland.park@hyatt.com

www.hyatt.com/en-US/hotel/new-zealand/park-hyatt-auckland/aklph



Indulge in the world of luxury, style, and elegance at Park Hyatt Auckland. Its spacious and comfortable rooms are perfect for holidaymakers, business travelers, and families seeking relaxation after a day of exploring Auckland.

Located on the water's edge, Park Hyatt Auckland offers expansive views across Wynyard Quarter's Lighter Basin and out to the Waitematā Harbour. This sophisticated waterfront retreat features 195 guestrooms, four restaurants and bars, versatile and elegant event spaces, a day spa, a 25-metre infinity pool, and a fully equipped fitness centre.

President Hotel Auckland

Auckland City Centre

112

27-35 Victoria Street West, Auckland 1010

+64 9 303 1333

reservations@presidenthotel.co.nz

www.cpghotels.com/hotels/president-hotel



Located in the heart of downtown Auckland, the President Hotel is just a short walk from many of Auckland's leading attractions including the Sky Tower, Britomart and the Viaduct.

112 spacious fully air-conditioned and non-smoking rooms that are great value for money ideal for families, couples, corporate clients, groups, and independent travelers. The hotel has a fitness room and fully equipped meeting facilities.

Pullman Auckland Airport



Auckland Airport

311

37 Tom Pearce Drive, Auckland Airport

+64 9 256 7901

hA8u9-re@accor.com

<https://all.accor.com/hotel/A8U9/index.en.shtml>



Te Arikiniui Pullman Auckland Airport boasts contemporary designed guest rooms and suites offering relaxing respite. The elevated top floor dining experience, Te Kaahu, has spectacular runway views and out to the Manukau Heads. Kuriri Café on the ground floor welcomes everyone to enjoy an espresso, lunch or grab a snack to go. State of the art boardroom spaces are located on the hotel's top floor. Unleash your athletic energy at the Pullman Power Fitness gym.

Pullman Auckland Hotel & Apartments

Auckland City Centre

324

Corner of Waterloo Quadrant & Princes Street, Auckland 1010

+64 9 353 1000

reservations@pullmanauckland.co.nz

www.pullmanauckland.co.nz



Pullman Auckland Hotel & Apartments is conveniently situated in the heart of the city. With 324 comfortable rooms, spacious suites and self-contained apartments offering views of the Waitemata Harbour and of the historic Albert Park, the hotel is the perfect place for a city stay. Relax by the 25m heated indoor lap pool, reset with a massage at Luxe Spa, meet colleagues in Tapestry Grill & Bar, be inspired in one of our 16 event spaces.

QT Auckland



Auckland City Centre

150

4 Viaduct Harbour Avenue, Auckland 1010

+64 9 379 9123

Reservations_QTAuckland@evt.com

www.qthotels.com/auckland



From the moment guests enter the hotel, they enjoy a quintessentially QT Auckland experience accompanied with QT quirk. The QT Auckland team are known for delivering QT's signature 'Unexpected and Unrequested' service, where guests might experience surprises such as personalised amenity.

The high standard of food and beverage venues are a destination in themselves. Esther, the hotel's award-winning restaurant led by renowned chef Sean Connolly, is inspired by the Mediterranean, evoking the warmth of being in someone's kitchen with a side of theatrical flair. On the 6th floor, guests will find Rooftop at QT, an elevated rooftop bar with views out over the harbour and a world-class drinks list.

Location is everything at QT Auckland. Guests can experience very best of the Auckland's lifestyle at their fingertips, with the vibrant Viaduct Harbour dining destination, Commercial Bay and Britomart retail precincts minutes away.

Accommodation

Activities & Attractions

Tours

Transport

Rydges Auckland



Auckland City Centre

267

- 59 Federal Street Auckland 1010
- +64 9 375 5900
- reservations_rydgesauckland@evt.com
- <https://www.rydges.com/accommodation/new-zealand/auckland>



Nestled in the vibrant heart of Auckland's Central Business District, Rydges' hotel location serves as an ideal starting point for city exploration, granting easy access to Auckland's most celebrated attractions.

The stylishly appointed rooms offer both comfort and modern conveniences, ensuring a serene retreat for guests. Some rooms feature stunning views of the iconic Sky Tower, while those in Harbour View rooms can enjoy breathtaking panoramas of the Auckland Harbour Bridge and the picturesque Waitemata Harbour.

For a dining experience within reach, the onsite steakhouse, The CUT Restaurant & Bar, offers a meticulously selected menu showcasing the finest cuts and an exquisite wine list, promising guests a memorable gastronomic journey without ever needing to leave the comfort of the hotel.

Rydges Formosa Golf Resort



Beachlands

50

- 110 Jack Lachlan Drive, Beachlands, Auckland
- +64 9 218 3870
- reservations_rydgesformosa@evt.com
- www.rydges.com/accommodation/new-zealand/formosa-golf-resort



Rydges Formosa Golf Resort offers a coastal escape that seamlessly combines the indulgent pleasures of an idyllic waterfront setting with a premium 18-hole championship golf course, masterfully crafted by the esteemed Sir Bob Charles, a renowned New Zealand professional golfer.

Guests embrace an unmatched experience that seamlessly blends comfort and captivating surroundings. Nestled along the scenic Pohutukawa Coast, 40 minutes southeast of Auckland's vibrant heart, the resort offers a rejuvenating escape that's more than a possibility – it's a promise.

Perched on a clifftop, the resort boasts sweeping views of the Hauraki Gulf, encompassing Waiheke Island, Rangitoto Island, and the Coromandel Peninsula.

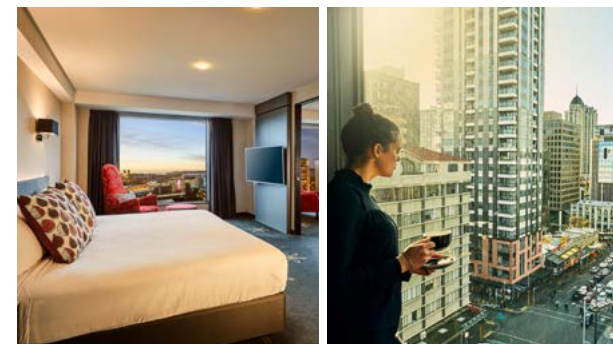
SkyCity Hotel



Auckland City Centre

320+

- Corner Victoria and Federal Streets, Auckland
- +64 9 363 6000
- hotelreservations@skycity.co.nz
- <https://skycityhotel.skycityauckland.co.nz>



SkyCity Hotel. Everything's right here.

Escape to a hotel where exceptional experiences happen every day. A place where you can enjoy genuine Kiwi hospitality and modern, spacious accommodation.

A choice of beautifully appointed premium king, twin rooms and premium suites are on offer, alongside family suite options.

Explore the sights and sounds of vibrant Auckland, including the iconic Sky Tower. Pamper yourself at rejuvenating spa facilities. Experience magnificent dining with over 20 restaurants, cafes and bars close by, not to mention theatres and the exciting SkyCity Casino.

Relax and refresh with our world-class facilities and services, where your comfort is our priority.

Accommodation

Activities & Attractions

Tours

Transport

SO/ Auckland



Auckland City Centre

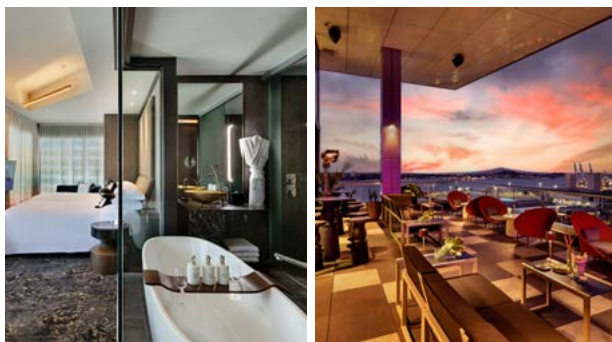
130

Corner of Customs Street East and Gore Street, Auckland Central

+64 9 379 1860

h9149@so-hotels.com

<https://so-hotels.com/en/auckland>



A bold statement in the central Britomart precinct, SO/ Auckland gloriously presides over the urban designer quarter to bestow uninterrupted views across the sparkling waters of Waitematā Harbour. Harbour Society serves reimagined Asian-inspired dishes with exceptional views of the Waitematā Harbour and Auckland skyline. Javalab Café blends the art of French patisserie with artisan coffee. Enjoy a sip of cocktail and live music at the MIXO lobby bar or HI-SO rooftop bar, in the glamour of the highest class.

Sofitel Auckland Viaduct Harbour



Auckland City Centre

90

21 Viaduct Harbour Avenue, Auckland 1010

+64 9 909 9000

h577-re1@sofitel.com

www.sofitel-auckland.com



Experience the very best of modern luxury at Sofitel Auckland, here you can indulge in a decidedly chic encounter that combines the spirit of the Viaduct Harbour location with the French Art de Vivre. Authentic and lively culinary experiences are met in the hotel's signature restaurant La Marée, soothing wellness journeys in Sofitel Spa, and exquisitely designed meeting spaces that exude chic design with a hint of the French touch.

Sudima Auckland Airport



Auckland Airport

153

18 Airpark Drive, Mangere, Auckland 2022

+64 9 551 8888

reservations@sudimahotels.com

www.sudimahotels.com/en/our-hotels/auckland-airport



Sudima Auckland Airport is an award winning 4.5-star hotel set in a quiet location 2.5kms from New Zealand's main airport. It is a Toitū Carbonreduce Certified hotel and exemplifies the best in sustainable architecture and systems, along with world class features, facilities and services.

Sudima Auckland Airport features well-appointed rooms, restaurant, bar, indoor heated pool, gym, free parking and is the perfect location if transiting through the airport on holiday or for business in the airport region. With its modern fit-out, facilities and services it represents 4.5-star style, comfort and value.

Accommodation

Activities & Attractions

Tours

Transport

Sudima Auckland City



Auckland City Centre

186

63-67 Nelson Street, Auckland Central 1010

+64 9 905 1719

reservations@sudimahotels.com

www.sudimahotels.com/en/our-hotels/auckland-city



Sudima Auckland City is conveniently located within easy walking distance of the bustling shopping, arts, dining and entertainment precincts making it the perfect base to explore the city or launch your holiday adventure or business trip.

Contemporary Sudima Auckland City features well-appointed rooms, including new 'u-rooms' designed to promote 'self-care' while travelling, popular modern-Asian plant-based restaurant East and rooftop bar Sunset with sweeping views of the upper harbour and out to the Waitakere Ranges. With its urban fit-out, facilities and services it represents 4.5-star style, comfort and value.

The Grand by SkyCity



Auckland City Centre

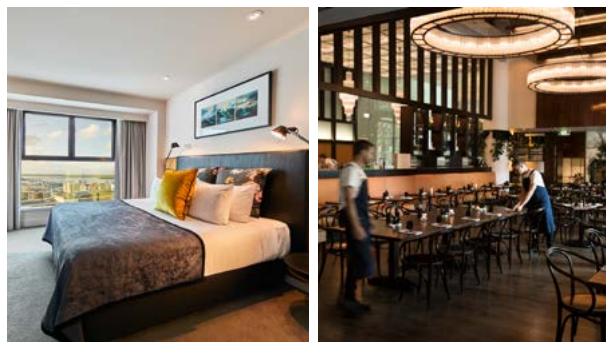
312

90 Federal Street, Auckland

+64 9 363 6000

reservations@skycity.co.nz

<https://thegrandbyskycity.skycityauckland.co.nz>



In the heart of the city, is a sanctuary.

A lavish hideaway resting high above the bustling night life of the city streets below.

A place of understated luxury, bursting with warmth, where those seeking excitement can revel in the elegant sophistication of this uniquely intimate refuge. More than 300 rooms, an in-door lap pool, sauna and spa onsite.

Here is where opulence and elegance meet.

The Hotel Britomart



Auckland City Centre

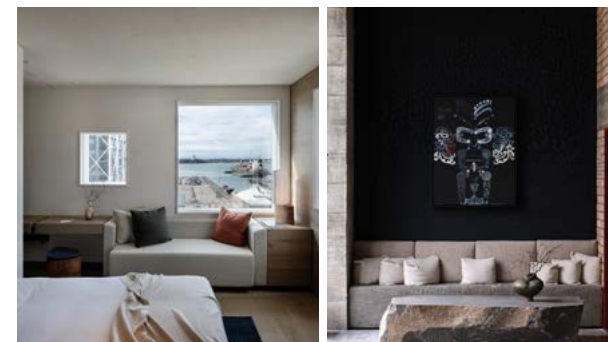
132

29 Galway Street, Britomart, Auckland 1000

+64 9 300 9595

reservations@thehotelbritomart.com

<https://thehotelbritomart.com>



Smart, soulful and contemporary, The Hotel Britomart welcomes guests to the best of downtown waterfront Auckland. New Zealand's first 5 Green Star hotel has beautiful timber-lined, cocoon-like rooms with elegantly tiled bathrooms, built-in sofas and hand-made ceramics.

Downstairs, the historic warehouses of the Britomart neighbourhood house some of the country's best restaurants, bars and cafes, while plant-lined pedestrian streets and laneways are full of incredible shopping. Just a few steps away is Auckland's beautiful waterfront, the ferry terminal and central business district, while the underground Britomart Transport Centre offers easy public transport connections to every part of the city.

The Sebel Auckland Manukau



Manukau

152

16 Lakewood Court, Manukau City, Auckland 2104

+64 9 261 1821

ha8q4@accor.com

<https://all.accor.com/hotel/A8Q4/index.en.shtml>



The Sebel Auckland Manukau is located in the heart of Manukau, around 15 minutes drive from Auckland Airport and with easy access to motorways. The hotel offers exquisite studio and apartment style accommodation to cater to your short and long term needs. Perfect for both business and leisure travellers.

The Sebel Auckland Manukau Hotel & Apartments provide guests comfort and style in a convenient location. Explore Ora Bistro Restaurant & Bar, modern global bistro fare in a stylish yet relaxed setting perfect for any occasion.

The Sebel Auckland Viaduct Harbour

Auckland City Centre

110

85 Customs Street West, Auckland Central

+64 9 978 4000

h8759@accor.com

<https://all.accor.com/hotel/8759/index.en.shtml>



Featuring spacious, stylishly appointed city view studios and one bedroom suites, guests can enjoy both the independence of contemporary apartment style living and the convenience of a 4.5 star hotel.

The Sebel Auckland Viaduct Harbour provides extensive views of the marina and the city.

The finest bars and restaurants, cafés, shops, transportation hubs and numerous leisure activities are all on your doorstep.

The Sebel Quay West Auckland

Auckland City Centre

36

8 Albert Street, Auckland Central

+64 9 309 6000

h8802@accor.com

<https://all.accor.com/hotel/8802/index.en.shtml>



The Sebel Quay West Auckland is ideally located in the very heart of Auckland City, within easy walking distance of the vibrant cafes & restaurants situated on the edge of the Viaduct Harbour. An exclusive boutique style apartment style suites featuring spacious living spaces, a relaxing indoor heated pool and spa, plus car parking.

Experience urban Auckland with an array of markets, international and artisan food stores, gathering the best of local produce to enjoy at leisure in the comfort of beautifully appointed one and two bedroom suites with complete with full kitchen, laundry facilities and private balconies offering views of Waitamātā Harbour and the city's skyline.

Whangaparaoa Lodge

Whangaparaoa

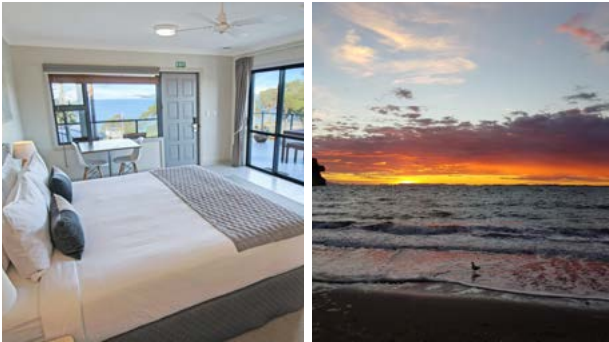
 14

 874 Whangaparaoa Road, Manly, Auckland

 +64 9 428 4666

 reservations@whangaparaoalodge.com

 www.whangaparaoalodge.co.nz



Discover boutique accommodation just steps away from the stunning and secluded Little Manly Beach in Whangaparaoa, Auckland. The modern studios and one-bedroom suites, featuring king beds, Chromecast TVs, kitchenettes, high-speed Wi-Fi, and complimentary parking, offer the perfect “home away from home” experience at the gateway to the Whangaparaoa Peninsula, Orewa, and Gulf Harbour.

Whether guests are journeying north or south, visiting family, embarking on golf getaways, conducting business, or attending a conference, the experienced and welcoming team is dedicated to delivering an unmatched stay.

Located just 35 minutes from Auckland city and 60 minutes from Auckland International Airport, this exceptional stay awaits.

Woodhouse Mountain Lodge

Matakana



 18

 471 Wyllie Rd, Kourawhero, Warkworth
Auckland 0981

 +64 9 425 9336

 stay@woodouselodge.nz

 <https://woodouselodge.nz>



Woodhouse Mountain Lodge covers over 100-acres of outstanding natural landscape, at the heart of the Matakana Coast, approximately 50 minutes north of Auckland Central. The 18 Private Villas are located close to all on-site facilities, providing guests with the perfect mix of seclusion and convenience.

Each villa comes with an exquisite bathroom with a bath for two, a comfortable lounge and study area, mini-bar, Nespresso machine, gas fire, outdoor seating area and luxury bedding to ensure a deep and restful night's sleep.

The villas are TV free, enabling guests to relax and enjoy the serenity of the Kourawhero Estate surroundings.

Accommodation

Activities & Attractions

Tours

Transport



Activities & Attractions

With lively urban precincts and a stunning natural playground so close together, it's easy to hop from one adventure to the next. From sailing and dolphin spotting out on the water to the city's galleries, museums and exciting attractions, Auckland has all the ingredients for a perfect tailor-made holiday.

AJ Hackett Bungy New Zealand



Auckland City Centre

📍 SkyCity Precinct – Corner of Victoria Street, and Federal Street

☎ +64 9 360 7748

✉ aucklandbungy@bungy.co.nz

🌐 www.bungy.co.nz



Experience two iconic landmarks and four heart-pounding activities that defy gravity. The Auckland Harbour Bridge and the Auckland Sky Tower offer a unique perspective, allowing those with a sense of adventure to take in the entire city.

Climb and bungee jump from Auckland's Harbour Bridge or stand 192 meters (about 629.92 ft) above Auckland City before taking the exhilarating leap from Auckland's Sky Tower.

All Blacks Experience



Auckland City Centre

📍 SkyCity Precinct – 88 Federal Street, Auckland

☎ +64 9 281 0025

✉ reservations@experienceallblacks.com

🌐 www.experienceallblacks.com



This full sensory, interactive experience allows visitors to connect with New Zealand and Māori art and culture, learn what makes the silver fern an revered emblem around the world, hear from legends and gain insights into Kiwi lifestyle, attitude and humour.

Visitors are introduced to unique taonga (treasures) including the All Blacks Mauri stone, a greenstone gifted to the team by Ngāi Tahu.

The All Blacks Experience is the ideal introduction for international visitors on their arrival to New Zealand. Through the lens of the All Blacks, celebrate and share the unique Kiwi culture, and experience the most incredible Haka performance.

Auckland Art Gallery



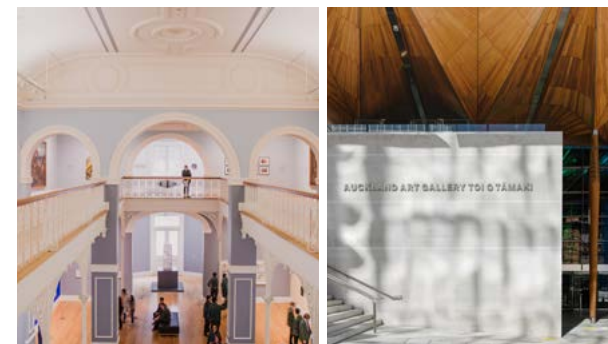
Auckland City Centre

📍 Wellesley Street E Corner Kitchener, Auckland Central 1010

☎ +64 9 307 7700

✉ gallerytours@aucklandcouncil.govt.nz

🌐 www.aucklandartgallery.com



With collections of more than 17,000 artworks, the Auckland Art Gallery (Toi o Tāmaki), is New Zealand's largest and most inspiring visual arts experience. The pieces include major holdings of New Zealand historic, modern and contemporary art, alongside outstanding works by Māori and Pacific artists.

Visitors can experience a guided walk through Māori art evolution and contemporary masterpiece, and even test their creativity through poi making, an element used on traditional Māori performance art. Private English and Mandarin tours available.

Auckland Museum



Parnell

- The Auckland Domain Parnell, Auckland
- +64 9 306 7048
- bookings@aucklandmuseum.com
- www.aucklandmuseum.com



Housed in one of NZ's finest heritage buildings, Auckland Museum is the cultural and spiritual touchstone for the many communities that inhabit this beautiful land, and the first stop for anyone wishing to gain an insight into New Zealand and its peoples. Priceless Māori and Pasifika treasures, amazing natural history, and a variety of new special exhibitions, events, and performances.

Tāmaki Paenga Hira is Auckland's War Memorial Museum, home to an ongoing remembrance of New Zealand's service personnel. The Museum is also NZ's oldest research institution, actively contributing to societal and environmental understanding.

Auckland Sea Kayaks



St Heliers

- 384 Tamaki Drive, St Heliers, Auckland
- +64 9 213 4545
- info@aucklandseakayaks.co.nz
- www.aucklandseakayaks.co.nz



Auckland Sea Kayaks offers diverse guided kayaking adventures in Auckland's Hauraki Gulf Marine Park, ranging from half-day to five-day trips. These experiences provide a quick escape from the city to explore volcanoes, islands, and the unique marine wildlife.

Highlights include the 6-hour Sunset Sea Kayak tour to Rangitoto, the largest of Auckland's volcanoes. Paddle across Waitemata Harbour against a stunning sunset, enjoy a Kiwi-style BBQ dinner on Rangitoto, and explore the summit with a knowledgeable guide. Other tours include Motukorea/Brown Island, Riverhead "Paddle to the Pub," and a two-day Motuihe Island Hopping Kayak Tour.

Auckland Zoo



Western Springs

- 100 Motion Road, Western Springs, Auckland
- +64 9 360 3805
- reservations@aucklandzoo.co.nz
- www.aucklandzoo.co.nz



Discover all of Aotearoa New Zealand at Auckland Zoo. Showcasing over 100 native plants and 60 native species, in six stunning habitats, Auckland Zoo is home to some of the rarest and most threatened wildlife – inviting us all to play a role as kaitiaki (guardians) for our taiao (natural environment). From the iconic kiwi and tuna, to tuatara and takahē, you'll walk away with a newfound appreciation for New Zealand's precious taonga (treasures). Auckland Zoo provides a hub to connect in nature together and encourage future generations to treasure and protect our natural world.

Accommodation

Activities & Attractions

Tours

Transport

Aucky Walky Tours



Auckland City Centre

- 📍 Auckland City Centre
- ☎ +64 21 378 267
- ✉ hello@auckywalky.co.nz
- 🌐 www.auckywalky.co.nz



Regarded as one of New Zealand's best First Day Experiences, Aucky Walky Tours help visitors find their feet in Auckland with small-group and private walking tours. The hidden lanes, local legends and best places to eat, shop and go.

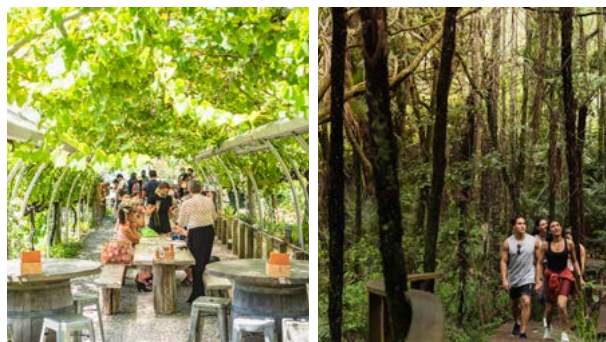
Tours include: Hello Auckland tour, Taste Auckland Food tour, Artwalk Auckland tour and a tour combining the walking Hello Auckland tour with an afternoon electric bike tour.

Brick Bay Wines & Sculpture Trail



Matakana

- 📍 17 Arabella Lane, Snells Beach 0982
- ☎ +64 09 425 4690
- ✉ glasshouse@brickbay.co.nz
- 🌐 www.brickbay.co.nz



On the coast in the Matakana Wine Region, Brick Bay spans 200 acres, featuring a boutique vineyard and an extensive outdoor sculpture trail. The trail showcases large-scale contemporary New Zealand sculptures against the backdrop of a picturesque natural environment filled with native bush and wildlife. The sculpture trail is an approximately one-hour walk, offering a unique and immersive experience.

Experience The Glass House restaurant, perched over a shimmering lake, offering lunch services that showcase the freshest New Zealand seasonal cuisine, drawing inspiration from the onsite farm produce, orchards, and gardens.

EcoZip Adventures



Waiheke Island

- 📍 150 Trig Hill Road, Onetangi, Waiheke Island 1081
- ☎ +64 9 372 5646
- ✉ book@ecozip.co.nz
- 🌐 www.ecozipadventures.co.nz



EcoZip is a multi award winning zipline and eco-tourism experience. Enjoy a breath-taking eco-adventure zipline on the beautiful, sub-tropical Waiheke Island.

A short ferry ride from Auckland, the island's idyllic location offers panoramic views and varied landscapes. In an Australasian first, EcoZip's three giant, dual ziplines allow you to zip side-by-side with a friend; making it the most uniquely social experience. Plus, you'll also enjoy a guided nature walk in a stunning swathe of ancient, pre-European forest and a scenic island mini-tour.

Explore Group New Zealand



Auckland City Centre

📍 Explore Booking Kiosk, Auckland Viaduct,
Quay Street, Auckland 1010

☎ +64 9 359 5987

✉ info@exploregroup.co.nz

🌐 www.exploregroup.co.nz



The team at Explore Group takes immense pride in Auckland and its harbour, and are ready to show visitors around. With extensive knowledge and enthusiasm Explore Group delivers unique experiences that truly showcase the destination. Their sailing and cruising experiences have become an Auckland 'must do'. Visitors can participate as crew on an actual America's cup yacht, enjoy sunset dining from a sailboat, or spot whale and dolphins in the Hauraki Gulf. The Explore Group is recognised for delivering excellent customer experience and their commitment to responsible and sustainable tourism.

Great Journeys New Zealand



Wellington to Auckland

📍 Auckland Strand Railway Station, Ngaoho Place,
Parnell, Auckland

☎ 0800 872 467

✉ bookings@greatjourneysnz.com

🌐 www.greatjourneysnz.com



Embark on a scenic 12-hour train journey, the Northern Explorer, covering 648km from Wellington to Auckland in New Zealand. Traverse the North Island's volcanic heart, passing through Tongariro National Park, a dual UNESCO World Heritage site. Enjoy the changing landscapes, from a snowy wonderland in winter to a rocky, otherworldly scene in summer. Experience the engineering feat of the Raurimu Spiral, pass towering viaducts, and marvel at cliffs draped in native bush. Journey through rural farmland, offering a peaceful and picturesque backdrop. The Northern Explorer provides a captivating and diverse exploration of New Zealand's natural beauty.

Matakana Village

Matakana

📍 2 Matakana Valley Rd, Matakana

✉ marketing@matakanavillage.co.nz

🌐 www.matakanavillage.co.nz



Discover the charm of Matakana Village, a picturesque destination that captures the essence of Aotearoa's vibrant community spirit and artisanal craftsmanship. On Saturdays, the renowned Matakana Village Farmers' Market comes alive, offering a bounty of fresh, locally sourced produce, gourmet delights, and handcrafted goods. Visitors engage with friendly local vendors, savour organic and artisanal treats, and soak in the lively atmosphere amidst live music and the lush green setting.

Matakana's allure extends beyond the market days. Open seven days a week, the Village invites visitors to explore its unique boutiques, art galleries, and cafes. Whether it's a leisurely stroll through shops showcasing local artisans, a cozy coffee break, or a cinematic escape in the boutique cinema, Matakana Village promises a delightful experience for every visitor, any day of the week.

New Zealand Maritime Museum



Auckland City Centre

📍 Corner Hobson and Quay Street,
Viaduct Harbour, Auckland

☎ +64 9 373 0800

✉ info@maritimemuseum.co.nz

🌐 www.maritimemuseum.co.nz



The New Zealand Maritime Museum - *Hui Te Ananui a Tangaroa* - is where the tales of people and the sea come alive. Through five permanent exhibitions, the museum celebrates our rich maritime heritage, offering narratives into our relationship with the sea, from the Great Pacific Migration a thousand years ago to modern innovations seen in the America's Cup and contemporary yachting.

Embark on a journey across the sparkling waters of the Waitematā Harbour aboard the museum's heritage vessel, Ted Ashby. Indulge in drinks and canapés while experiencing a private tour, immersing yourself in the charm of Auckland's sailing culture with panoramic views of the city.

Power to the Pedal

Auckland City Centre

📍 99 Halsey Street, Auckland 1010

☎ +64 21 082 94218

✉ info@powertothe pedal.com

🌐 www.powertothe pedal.com



Embark on a journey through Auckland with Power to the Pedal's guided bike tours. Glide effortlessly along on electric bikes and discover the highlights of this amazing city during the day and at night and wander along the award-winning cycleway network. 100% local guides who love to explain what makes Auckland such a fantastic place to live, this includes taking participants to 'secret' places only the locals know about.

SEA LIFE Kelly Tarlton's Aquarium



Ōrākei

📍 23 Tamaki Drive, Ōrākei, Auckland 1071

✉ operations@kellytarltons.co.nz

🌐 www.visitsealife.com/auckland



Take an underwater journey through the world-famous SEA LIFE Kelly Tarlton's, Auckland and discover a diverse collection of marine life up close.

Marvel at the world's largest sub-Antarctic penguin colony display, encounter the world's largest species of stingray and explore NZ's largest collection of sharks. Journey through a unique Southern Ocean experience and be mesmerised at it's amazing live jellyfish display. Learn about the work with rescued sea turtles and visit the magical Seahorse Kingdom, where you'll find the world's only display of Spiny Sea Dragons, among other wonders.

For visitors who prefer a closer encounter, the aquarium offers thrilling experiences to snorkel in the Shark Cage, or the Penguin Passport, to get up close and personal with penguins.

Sky Tower



Auckland City Centre

- 📍 Corner Victoria and Federal Streets, Auckland
- ☎ +64 9 363 6000
- ✉ skytower@skycity.co.nz
- 🌐 <https://skycityauckland.co.nz/sky-tower>



It's hard to imagine an Auckland skyline without the iconic Sky Tower. For over 26 years now, this magnificent 328m high structure has been the focal point of beautiful Tāmaki Makaurau, rising up out of the land to delight locals and visitors alike. Take time to discover the full story of this incredible feat of modern engineering – its pioneering past, colourful present and visionary future.

So, join us above the clouds to experience incredible 360° views of Tāmaki Makaurau, taking in ancient volcanoes, sparkling sunlit harbours and beyond. And if breath-taking panoramas alone aren't enough to excite, indulge in a wealth of dining options including New Zealand's highest bar, interactive installations, and adrenaline-fueled activities.

You haven't seen Auckland, until you've seen it from the top.

Te Arai Links



Te Arai

110

- 📍 11 Te Ara Whenua, Miharo Kotiti, Tomarata 0974
- ☎ +64 9 883 4600
- ✉ reservations@tearai.com
- 🌐 <https://tearai.com>



Positioned alongside a pristine New Zealand coastline, Te Arai Links is a newly developed world-class golf destination. Boasting two pure links golf courses one designed by Bill Coore & Ben Crenshaw and the other by Tom Doak.

There are multiple accommodation options, including hotel suites, two bedroom cottages and four bedroom villas, all offering golf and ocean views. Dining options include Ric's clubhouse restaurant on the North Course and the Ocean fine dining restaurant will open in 2024. Golf aside, Te Arai Links has a list of activities on offer including massage and spa treatments, beach activities and local tours.

The Heke – Kitchen, Brewery and Distillery



Waiheke Island

- 📍 64 Onetangi Road, Waiheke Island
- ☎ +64 9 372 0020
- ✉ bookings@theheke.co.nz
- 🌐 www.theheke.co.nz



Visit a world-class, sustainable distillery and brewery located on Waiheke Island. Tour, taste, learn, and savor delicious items from the menu. The HEKE is the home of New Zealand's best whisky and craft beer. For gin lovers, that's an option too.

Explore the grounds set in four acres of beautiful gardens featuring Māori art. Learn how The HEKE creates whisky and beer and delve into significant local stories.

Accommodation

Activities & Attractions

Tours

Transport

Thrillzone / Escape Quest



Auckland City Centre and Takapuna

📍 Ferry Building – 99 Quay Street, Auckland City Centre & Level 1, 28 Hurstmere Road, Takapuna

☎ +64 9 486 0773

✉ hello@thrillzone.co.nz

🌐 www.thrillzone.co.nz



Thrillzone & Escape Quest is Auckland's one stop location for a world of thrills. Offering state of the art virtual reality, award winning escape games, and Auckland's only 360-degree battleground. Perfect for team building, parties and a fun time with friends and family.

Take your escape room skills to the beautiful Auckland streets and tackle outdoor escape adventures. Auckland City (groups only) and Takapuna locations.

Waiheke Distilling Co.

Waiheke Island

📍 258 Cowes Bay Road, Waiheke Island, Auckland

☎ +64 27 390 3561

✉ info@waihekedistilling.co.nz

🌐 www.waihekedistilling.co.nz



An award-winning craft distillery and garden bar, boasting arguably the best views on Waiheke. Visitors are welcome for tours, tastings, cocktails, G&Ts, botanical vodkas and shared platters. Located at the stunning Eastern end of Waiheke, they craft, distil, and bottle bespoke gins and botanical vodkas on-site. Additionally, cellar door sales, corporate venue hire, and branded custom gin blends are available. Come for the gin and stay for the views!

Westfield Newmarket

Newmarket

📍 277 Broadway, Newmarket 1023

☎ +64 9 978 9400

✉ newmarket@scentregroup.co.nz

🌐 www.westfield.co.nz/newmarket



Newmarket is exactly what its name suggests – a contemporary hub for shopping. Most of the shiny brick-and-mortars are situated along Broadway, its busy thoroughfare, with Westfield Newmarket at one end and the cobbled laneways of Teed Street at the other.

The Westfield New Market is a hub for shopping, fun and relaxation. The two-building mall rises five storeys housing global luxury brands, high-street shops, department stores and just about everything in-between, with duty free shopping available for some retailers. It's Rooftop Dining area provides an option for everyone, from cocktails to beers, Asian Fusion, and American bites.

The centre is well connected to public transport and luggage storage is available at the Guest Services Desks for convenience.

Wētā Workshop Unleashed



Auckland City Centre

📍 Level 5, 88 Federal Street, SkyCity, Auckland 1010

☎ +64 4 909 4035

✉ bookings@wetaworkshop.co.nz

🌐 <https://tours.wetaworkshop.com/unleashed>



Wētā Workshop Unleashed is global award-winning movie-making tour.

Explore interactive and immersive make-believe film sets, focusing on the worlds of horror, fantasy and sci-fi. It's your chance to get up-close and hands-on with enchanting environments, resident creatures, one hyper-realistic giant, a galactic robot, and much more.

The crew will take you on a guided journey through three fully developed and original film concepts: a nail-biting horror, a fantasy epic and a mind-bending sci-fi. We've written the scripts, we've storyboarded the scenes, we've completed the world-building and design. Dive into a world of the imagination as you explore filmmaking up close.

This ultimate showcase of creativity with enchanting environments offers translation support in multiple languages and daily Mandarin tours.

Accommodation

Activities & Attractions

Tours

Transport



Tours

Tours are a great way to discover Auckland, whether visiting some of our most popular attractions, or uncovering the region's hidden gems.

Ananda Tours



Waiheke Island

- +64 9 372 7530
- info@ananda.co.nz
- www.ananda.co.nz



Ananda Tours is a Waiheke Island family-owned company that has been sharing the Island for over 23 years. Using close partnerships and a highly knowledgeable team, Ananda Tours bring together a seamless experience from the moment you step foot on the Island to the moment you leave.

Ananda Tours offer a range of shared and private tours and packages and can customise tours. Ananda Black offer premium private and individually tailored tours and packages to suit discerning travellers using luxury Mercedes vehicles, helicopters, private charter yachts and aircraft.

Auckland & Beyond Tours



Greater Auckland Region

- +64 22 047 4575
- info@aucklandandbeyond.co.nz
- www.aucklandandbeyond.co.nz



Auckland & Beyond Tours specialises in private and small group tours in Auckland.

Day trips from Auckland will show your customers the region's highlights and top attractions. Beyond the Auckland region tours include Hobbiton Movie Set, Waitomo Glow Worm Caves, The Coromandel Peninsula, The Bay of Islands, Rotorua Geothermal Valleys and much more.

With a fleet of luxurious Mercedes vehicles and a team of professional tour guides/drivers you can trust Auckland & Beyond to provide the best service and exceed your expectation.

Bush and Beach



Greater Auckland Region

- +64 9 837-4130
- info@bushandbeach.co.nz
- www.bushandbeach.co.nz



Bush and Beach is Auckland's premier small-group tour company and has been operating for 39 years. Multi-award-winning tours to lush rainforest, and wild black sand beaches provide an experience of spectacular natural worlds. Entertaining guides provide an interactive experience for FITs and groups.

Their diverse range of tours caters to small groups, featuring highlights such as the Auckland City Highlights tour and Kumeu Wine Country excursion.

They take pride in their achievements, having been the inaugural winner of TECNZ's Small Business Operator of the Year award in 2016, a finalist in the 100% Pure NZ Experience Awards in 2019 and 2021, and certified as CarboNZero.

Bush and Beach is leader in regenerative Tourism.

Accommodation

Activities & Attractions

Tours

Transport

Kiwi Connect NZ



Greater Auckland Region & Waiheke Island

- +64 21 492 016
- tours@kiwiconnect.co.nz
- www.kiwiconnect.co.nz



A great selection of cultural, scenic & wine tours in both Auckland & Waiheke Island on 100% electric vehicles.

Kiwi Connect sightseeing tours offer an immersive journey through the heart of Auckland, where travellers uncover the city's vibrant culture, stunning landscapes, and rich history.

For those seeking an escape, they can venture to the serene paradise of Waiheke Island, renowned for its world-class wineries, idyllic beaches, and enchanting art scenes. Whether delving into Auckland's urban vibrancy or savoring the serene beauty of Waiheke, Kiwi Connect ensures a seamless, eco-friendly experience, allowing travelers to absorb the best of both locations.

Terra and Tide



Waiheke Island

- 44 Hekerua Road, Oneroa, Waiheke Island 1081
- +64 21 669 722
- hello@terraandtide.co.nz
- https://terraandtide.co.nz



Explore the natural wonders of Waiheke Island and the Hauraki Gulf with Terra and Tide's intimate group outings. On Waiheke, indulge in guided art and nature day walks, spanning headlands, bush, beaches, and vineyards. Immerse yourself in multi-day guided walking tours, delve into cultural encounters, or opt for private personalized excursions. Seek rejuvenation with wellness and forest therapy sessions or embark on corporate team-building adventures.

Set sail aboard the 41-foot catamaran, Pacific Star, for unparalleled sailing experiences. Discover pest-free islands, partake in wildlife walks, and uncover secluded beaches and coves. Marvel at breathtaking vistas, diverse wildlife, lush bushland, and pristine beaches. Indulge in exquisite local wines and cuisine while enjoying uniquely tailored adventures guided by local experts.

The Big Foody Food Tours



Auckland City Centre

- +64 21 481 177
- elle@thebigfoody.com
- www.thebigfoody.com



The Big Foody Food Tours are designed to showcase Tāmaki Makaurau Auckland through the eyes of a local and are a delightful way to learn, taste, smell and experience the region. The tours are led by dedicated food lovers who take pride in showing off local hidden gems. Introducing guests to artisans, brewers, vineyard owners and producers sharing their history and stories. Daily scheduled tours include: The Tastebud Tour, A Place at our Table and Flavours of our City. Private group food tours can be curated for an unforgettable experience.

Accommodation

Activities & Attractions

Tours

Transport

TIME Unlimited Tours



Greater Auckland Region

+64 9 846 369

info@newzealandtours.travel

www.newzealandtours.travel



TIME Unlimited Tours is one of New Zealand's most awarded family owned & operated tourism businesses. Founded by Neill and Ceillhe Sperath in 2005, it has become an iconic Luxury, Māori & Eco-tourism operator with a proven reputation to put their manuhiri (valued visitors) at the centre of the experience within Tāmaki Makaurau (Auckland) and throughout Aotearoa (NZ). Their luxury small group & private tours are known for exceptional service second to none.

Accommodation

Activities & Attractions

Tours

Transport



Transport

It's easy to get to and around Auckland. The region's many transport options cater to visitors of all types.

Boss Black Ltd

Greater Auckland Region

- +64 27 559 3107
- info@bossblack.nz
- www.bossblack.nz



Explore Boss Black's luxury chauffeur service with private rides in black Mercedes-Benz vehicles, featuring S Class Sedans, 12-seat Sprinters, and 7/8-seat Valentines. Services include intercity transfers, VIP experiences, business meetings, and conference and event transportation.

Cruise New Zealand

Auckland City Centre

- Departures from Auckland Viaduct Harbour
- +64 21 039 7031
- info@cruisenzeland.co.nz
- www.cruisenzeland.co.nz



Cruise New Zealand operates three luxury charter vessels including the 88ft super catamaran "Rua Moana", 60ft high speed foiling catamaran "F5" and 55ft catamaran "Escape".

Step aboard and experience an unforgettable cruise. Enjoy a range of land and water-based activities accompanied by a delicious meal and beverages. Perfect for special occasions, birthdays, weddings, Christmas functions, overnight excursions, corporate and client entertainment.

Fullers360



Auckland City Centre

- Departures from Auckland Ferry Terminal
- +64 9 367 9111
- enquiries@fullers.co.nz
- www.fullers.co.nz



Fullers360 has been the leading cruise and ferry operator in Auckland for over 30 years and offers a range of cruises and tours around Auckland Harbour and the islands of the Hauraki Gulf Marine Park. Leisure trips include Rangitoto Island - Auckland's newest volcano, and Waheke Island - the island of wine.

Accommodation

Activities & Attractions

Tours

Transport

GO Rentals



Auckland City, Auckland Airport & Waiheke Island

- +64 9 974 1598
- info@gorentals.co.nz
- www.gorentals.co.nz



Discover the ease of car rental in Auckland with GO Rentals, the award-winning, locally owned, and independently operated car rental company in New Zealand. Offering a fleet of quality new and late-model petrol and electric cars, people movers, vans, and 4WD vehicles, GO Rentals provides convenient pick-up and drop-off services at Auckland Airport, Auckland City, and Waiheke Island.

The team at GO Rentals excels in customer service. With an impressive average pick-up time of just three minutes, competitive hire rates, fuel savings, and options to offset carbon emissions, they go above and beyond.

Their user-friendly app allows visitors to access discounted activities, complete check-in, and even control aspects of the Tesla Model 3 or Model Y. Choose GO Rentals for a seamless and enjoyable Auckland experience.

Heletranz Helicopters



Greater Auckland Region

- 234 Rosedale Road, Albany, Auckland
- +64 9 415 3550
- info@heletranz.co.nz
- www.heletranz.co.nz



Recognised as Auckland's premier helicopter service, Heletranz offers an array of unforgettable experiences. From scenic heli transfers to delightful dining and exciting fishing adventures, Heletranz provides exclusive access to stunning locations across Auckland, Waiheke, Great Barrier Island, and beyond. Elevate your clients' travel experiences with Heletranz.

Highlighted tours include scenic flights over iconic landmarks such as the Sky Tower and volcanoes, while Waiheke options feature Heli-dine Staycations at award-winning wineries and luxury lodges.

Island Aviation



Greater Auckland Region

- 70-96 Hector Sanderson Road, Great Barrier Island
- +64 9 390 1122 / 022 643 7440
- info@islandaviation.co.nz
- https://islandaviation.co.nz



Island Aviation takes pride in connecting visitors to Tāmaki Makaurau and the Hauraki Gulf while championing conservation efforts. Their mission is to foster a deep connection between travelers and the region's natural wonders, especially islands home to Aotearoa, New Zealand's precious birds and wildlife.

From island hopping, to charter flights, and scenic tours, Island Aviation provides diverse and personalised experiences, allowing visitors to tailor their journey or choose from curated package deals that highlight the beauty of islands such as Waiheke and Great Barrier in the Hauraki Gulf.

Useful information

Time Zone



New Zealand Standard Time is 12 hours ahead of Greenwich Mean Time (GMT). Daylight saving runs from the end of September until early April, when the clocks advance by 1 hour, i.e. GMT +13 hours.

Currency



New Zealand dollars (\$) and cents (c). There are five notes (\$5, \$10, \$20, \$50, \$100) and five coins (10c, 20c, 50c, \$1, \$2).

Emergency services

111

111 is the emergency number for Police, Fire and Ambulance.

Driving



Drive on the left side of the road in New Zealand. All drivers, including visitors from other countries, must carry their licence or permit at all times when driving.

Smoke-free policies



In New Zealand it is illegal to smoke in most indoor spaces, including workplaces, function venues, cinemas, pubs, restaurants and hospitality venues, as well as all public transport. Cigarettes cannot be sold to anyone under 18.

Tipping and service charges



Tipping is not expected in New Zealand but visitors may wish to tip for special service or kindness.

Electricity



240V, 50Hz, with Australian/New Zealand pattern three-pin sockets.

Discover Tāmaki Makaurau Auckland

E tourismtrade@aucklandnz.com

W industry.aucklandnz.com/trade-tourism

Asset Library assets.aucklandnz.com
