



Te Puna  
Creative Innovation Quarter

## Te Puna Creative Hub

8/14 Henderson Valley Road  
Te Kōpua Henderson  
Tāmaki Makaurau Auckland



## Te Puna Creative Hub

**Discover Te Puna Creative Hub, a place where ancestral wisdom and creativity converge to generate something extraordinary.**

Located at the heart of Te Kōpua Henderson, Te Puna Creative Hub offers cost-effective, adaptable spaces with state-of-the-art tools and technologies to bring your creative vision to life.

Combining the power of high-tech facilities, including a digital theatre and black box studio, alongside premium spaces such as The Grounds restaurant, Urban Playground, a grand foyer and mezzanine, Te Puna Creative Hub is Tāmaki Makaurau Auckland's home of unforgettable creative experiences.

Whether you're looking to film your next screen production or hold a live performance, formal dinner, awards ceremony, conference, team-building activity, cocktail function or exhibition, contact our dedicated team who take a hands-on approach to delivering exceptional outcomes.

Free and affordable parking onsite and within walking distance.

**Book with us today!**

# Kōmanawa

## Multi-functional Digital Theatre

### Key features

- 159 seats (retractable)
- Dance floor (semi-sprung)
- Immersive projection infinity wall (white)
- Black box set up – curtain coverage (black)
- Green room
- Back stage
- Soundproof rated

### Dimensions

- Length 30,300mm (full length)
- Length of theatre 21,400 mm (back of seats to projection back wall)
- Width 14,600mm
- Height to knee: 3800mm
- Height to apex: 6370mm
- Lighting rig in theatre: rigging lowest point 3300mm

### Fire regulations

- 354 pax

### Equipment

- Recommended by industry
- Public address system: QSC L Class (LA-112 active line array speakers)
- Audio console: Yamaha DM7
- Wireless mic system: Shure ULXD4Q with ULXD2-BETA87A microphones
- Lighting rig with lights installed

Ask our team about immersive projection screenings - multiple projectors and permanent infinity wall for hire.

### Other

- Fibre, three-phase power, WIFI



# Takawai Black Box Studio



<b>Key features</b>	<ul style="list-style-type: none"><li>• Clear span black box studio with acoustic treatment</li><li>• Roller door access</li><li>• Greenscreen wall (6m width x 3.6m height)</li><li>• Concrete flooring</li></ul>
<b>Dimensions</b>	<ul style="list-style-type: none"><li>• Length 30,300mm</li><li>• Width 15,400mm</li><li>• Height to knee: 3800mm</li><li>• Height to apex: 6370mm</li><li>• Lighting rig: 6000mm x 5000mm</li></ul>
<b>Fire regulations</b>	<ul style="list-style-type: none"><li>• 140 pax</li></ul>
<b>Equipment</b>	<ul style="list-style-type: none"><li>• Lighting rig: 6000mm x 5000mm</li><li>• Black curtains: 6000mm x 5000mm x 5000</li></ul>
<b>Other</b>	<ul style="list-style-type: none"><li>• Fibre, three-phase power, WIFI</li></ul>

# Grand Foyer

## Key features

- Impressive, high stud glass entrance to a wide foyer
- Red carpet runs the length
- Leads to Kōmanawa Multi-functional Digital Theatre and The Grounds restaurant
- Striking full length drapes, black brick walls and lighting
- Programmable sound system

## Dimensions

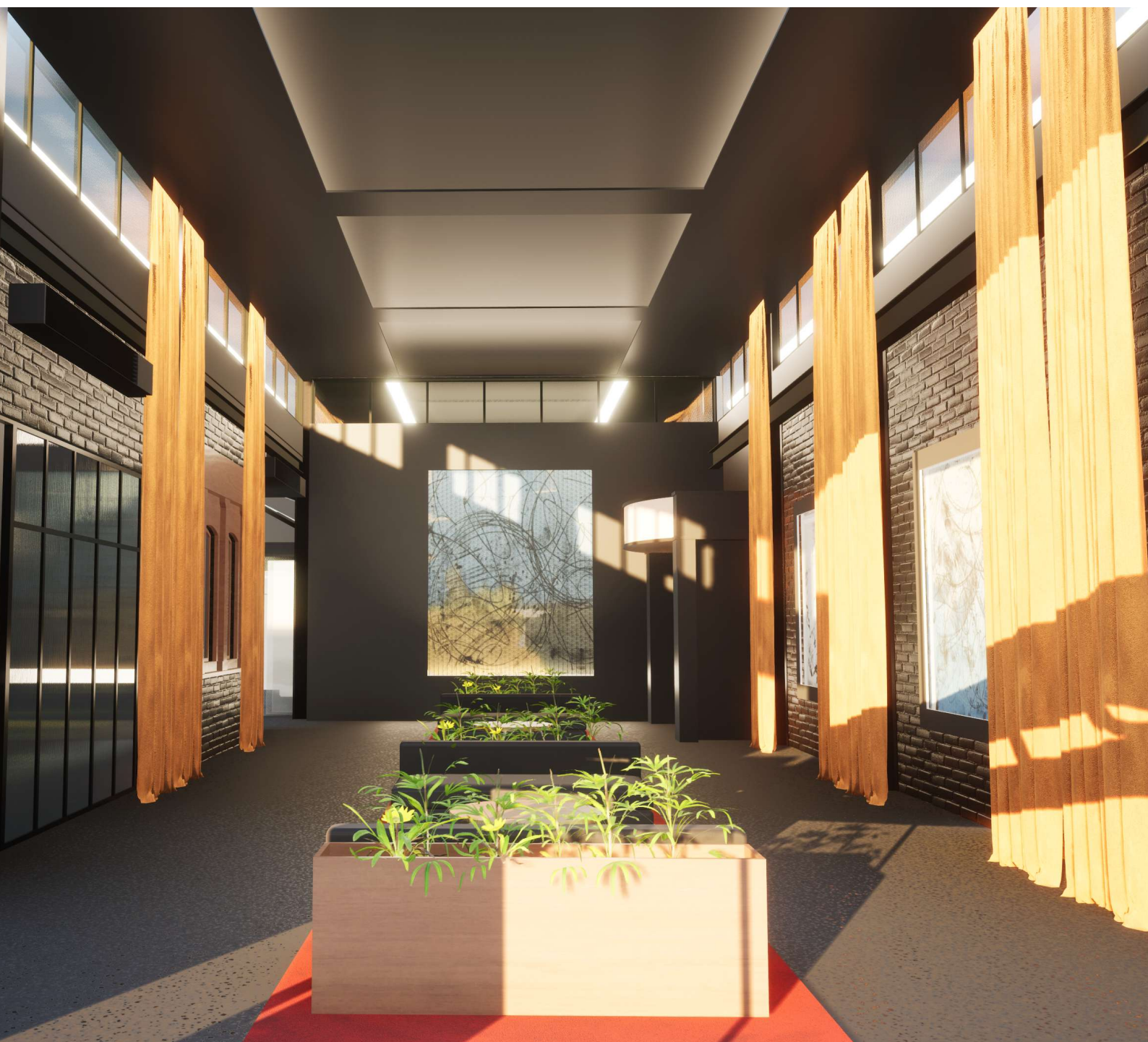
- 10,000mm x 4000mm x 6300mm

## Fire regulations

- 105 pax

## Other

- Fibre, three-phase power, WIFI



# Mezzanine



## Key features

- Light, elevated multi-functional space
- Timber panelled ceiling, with exposed beams and floor
- Overlooks The Grounds restaurant and outdoor area
- Access by staircase (no ramp or lift)

## Dimensions

- Length 10,800mm
- Width 7000mm
- Height to knee: 2500mm
- Height to apex: 4100mm

## Fire regulations

- 30 pax

## Equipment

- Long tables and dining chairs
- Freestanding screen monitor and remote
- Programmable sound system

## Other

- Fibre, three-phase power, WIFI

# The Grounds Restaurant

## Key features

- The Grounds restaurant, offering delicious Kiwi cuisine, gorgeous wine, quality coffee and down-to-earth service in a relaxing, stylish environment
- Full professional kitchen accommodates large group bookings, private functions and catering for on-site and off-site events
- Bar service for theatre events
- 'Dinner and show' or 'lunch and show' / 'lunch and conference' options available as an add-on to bookings in other venues at Te Puna Creative Hub
- Inside seating areas can be reconfigured for private bookings
- Flexible space for live performances
- Outside dining area seats 50

## Dimensions

- Inside: 50,000mm x 10,000mm x 10,000m
- Outside: 10,000mm x 10,000mm

## Fire regulations

- 300 pax

## Equipment

- Full commercial kitchen, dining room, alfresco dining
- Programmable sound system with speakers
- Children's playground

## Other

- Fibre, three-phase power, WIFI



Te Puna

# Creative Hub Boardroom



This image is representative only and does not depict the actual space.



## Key features

- Stylish high-stud large boardroom
- Seats 20 pax
- Natural light
- Catering including coffee service from The Grounds restaurant available during operating hours
- Bookable by the hour (two-hour minimum)

## Dimensions

- 7600mm x 6000mm

## Fire regulations

- 20 pax

## Equipment

- Table 5000mm length x 1000mm width
- Soft seating benches and chairs
- Audiovisual set-up (wall-mounted monitor and speaker)

## Other

- Fibre, three-phase power, WIFI, HDMI cable, multiple power points



# World-class centre of excellence for creative industries

Te Puna Creative Innovation Quarter aspires to be a world-class centre of excellence for creative industries in Tāmaki Makaurau Auckland – a hub for screen, video games, creative tech, music, arts and performing arts – like no other in the world.

Driven by a partnership between Tātaki Auckland Unlimited, Auckland’s economic and cultural agency, and Te Kawerau ā Maki, the mana whenua authority for west Auckland, work is well under way to establish a thriving creative innovation quarter in the heart of Te Kōpua Henderson.

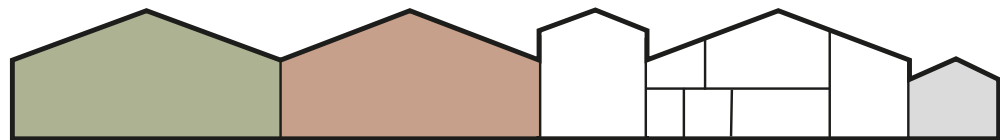
Bordered by Keeling Road and Great North Road, and part of the Eke Panuku Development Unlock Henderson urban regeneration area, Te Puna Creative Innovation Quarter will be a circuit of creative industries linking Henderson village, Corban Estate Arts Centre and Auckland Film Studios in Henderson Valley.

At the heart of Te Puna Creative Innovation Quarter is Te Puna Creative Hub on Henderson Valley Road, providing a physical space for collaboration, fostering innovation and training and upskilling initiatives for west Auckland.

We look forward to welcoming you to Te Puna Creative Hub.



# Creative Hub Site map



**Takawai Black Box Studio**  
Studio for hire. Multi-functional space for black box filming, training, broadcast, rehearsal and corporate events.

**Kōmanawa Multi-functional Digital theatre**  
Theatre for hire.

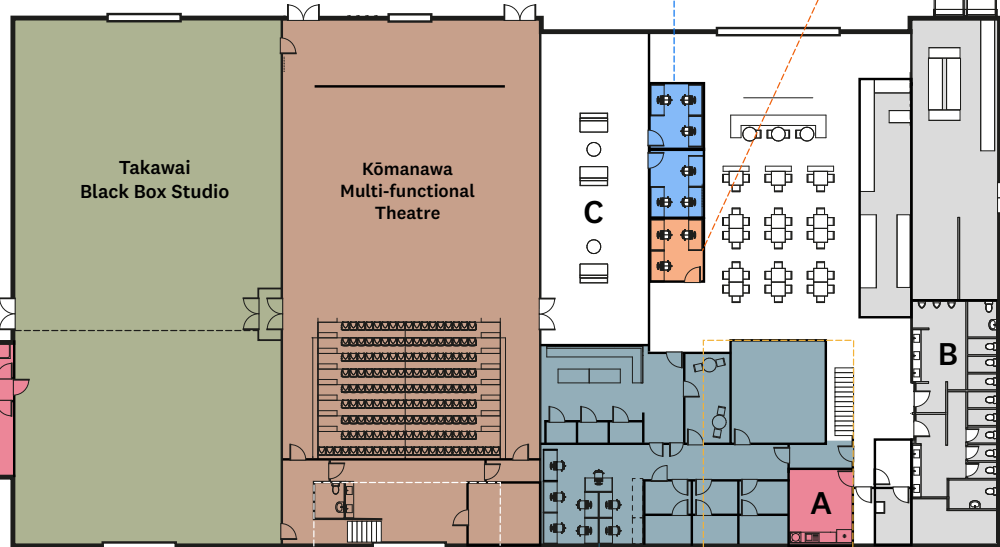
**Te Puna Creative Hub Boardroom and office space**  
Boardroom for hire. Equipped with digital presentation and hybrid meeting capability.

**Office Space**  
Office space for creative tech

4 x Parking Bays  
8 x Parking Bays (tenant)

Office Space

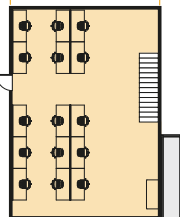
**Office Space**  
Office and theatre space for tenancy



21 x Parking Bays

Theatre AV and lighting operations desk

**Crescendo**  
Office and recording studio occupied by Crescendo, a social enterprise and commercial sound recording and music production studio.



**Mezzanine**  
Mezzanine office space for tenancy.

**Shared Amenities**  
A Kitchen and shower  
B Bathrooms  
C Foyer (also hire space)



Te Puna  
Creative Innovation Quarter

Te Kōpua Henderson  
Tāmaki Makaurau Auckland

---

Te Puna Creative Hub  
8/14 Henderson Valley Road  
Te Kōpua Henderson, Tāmaki Makaurau Auckland  
Email: [info@tepunacreative.com](mailto:info@tepunacreative.com)