

Tāmaki Makaurau Auckland Product Directory



JANUARY
2025

P4 Accommodation

AUCKLAND CITY CENTRE	Airedale Boutique Suites Cophthorne Hotel Auckland City Cordis, Auckland by Langham Hospitality Group Grand Millennium Auckland Heritage Auckland Hilton Auckland Horizon by SkyCity Hotel DeBrett Hotel Grand Chancellor Auckland ibis Budget Auckland Central Lylo M Social Auckland Mövenpick Hotel Auckland Parkside Hotel & Apartments Pullman Auckland Hotel & Apartments QT Auckland Rydges Auckland SkyCity Hotel SO/ Auckland Sofitel Auckland Viaduct Harbour SOHO Hotel Sudima Auckland City The Grand by SkyCity The Hotel Britomart The Sebel Auckland Viaduct Harbour The Sebel Quay West Auckland Voco Auckland City Centre Waipuna Hotel & Conference Centre
AUCKLAND AIRPORT	Heartland Hotel Auckland Airport ibis Budget Auckland Airport Novotel Auckland Airport Pullman Auckland Airport Sudima Auckland Airport
WIDER AUCKLAND REGION	Delamore Lodge ibis Auckland Ellerslie Novotel Auckland Ellerslie Omana Luxury Villa PurePod - Rewarewa Rydges Formosa Golf Resort The Sebel Auckland Manukau Woodhouse Mountain Lodge

P19 Activities and Attractions

AUCKLAND CITY CENTRE	Auckland Bridge Climb & Bungy by AJ Hackett Bungy All Blacks Experience Auckland Art Gallery Auckland Museum Auckland Sea Kayaks Cruise New Zealand Explore Group Cruises Explore Group Sailing New Zealand Maritime Museum Power to the Pedal SkyJump & SkyWalk by AJ Hackett Sky Tower The Art Tour Guide Thrillzone / Escape Quest Wētā Workshop Unleashed
MATAKANA	Brick Bay Wines & Sculpture Trail Matakana Village
WAIHEKE ISLAND	EcoZip Adventures e-Ride Waiheke Man O'War Vineyards The Heke – Kitchen, Brewery and Distillery
WIDER AUCKLAND REGION	Auckland Zoo Great Journeys New Zealand SEA LIFE Kelly Tarlton's Aquarium Te Arai Links Westfield Newmarket

P29 Tours

Ananda Tours Auckland & Beyond Tours Aucky Walky Tours Bush and Beach GoGuided Social Nature Movement Terra and Tide The Big Foody Food Tours TIME Unlimited Tours Waiheke Wine Tours Ltd
--

P34 Transport

Air Chathams Boss Black Ltd Fullers360 Heletranz Helicopters Island Aviation SeaLink Travel Company
--

P37 Useful Information



T Ā M A K I M A K A U R A U A U C K L A N D

Discover Auckland, New Zealand's largest and most diverse city, where sparkling waters, lush landscapes and city sophistication converge. World-class dining, shopping and luxurious accommodation are all within reach of water adventures on the Hauraki Gulf.

Immerse yourself in activities from sailing and island exploration to urban walks and native forest trails. Hike our maunga, for city-wide views, savour local award-winning wines, take time to discover the beauty of Waiheke Island and Matakana Coast, or experience captivating performances, museums and art, connecting with the region's rich history, natural beauty and distinctive urban culture.

We look forward to welcoming your clients to our home, Tāmaki Makaurau Auckland.

FUN FACTS



In New Zealand's indigenous Māori language, Auckland is called Tāmaki Makaurau which means a **'place desired by many.'**



Auckland's landscape is dotted with **53 volcanic cones**. The largest, youngest and most iconic is Rangitoto Island, which emerged from the water approximately 650 years ago.



Auckland is home to about **1.7 million people** - more than a third of New Zealand's population.



One of the few cities in the world bordered by **three harbours on two separate bodies of water** - The Pacific Ocean on the east coast and the Tasman Sea on the west coast.



Westhaven Marina, on the city's doorstep, is the **largest marina in the Southern Hemisphere**.



The Hauraki Gulf Marine Park encompasses an incredible area of **1.2 million hectares and more than 50 islands**. Many islands are easily accessible by ferry from downtown Auckland, including Waiheke Island, Rangitoto Island and Tiritiri Matangi Island.



Auckland is fortunate to enjoy one of the most diverse and unique music scenes in the world - so much so, that it's officially a **'UNESCO City Of Music'**.

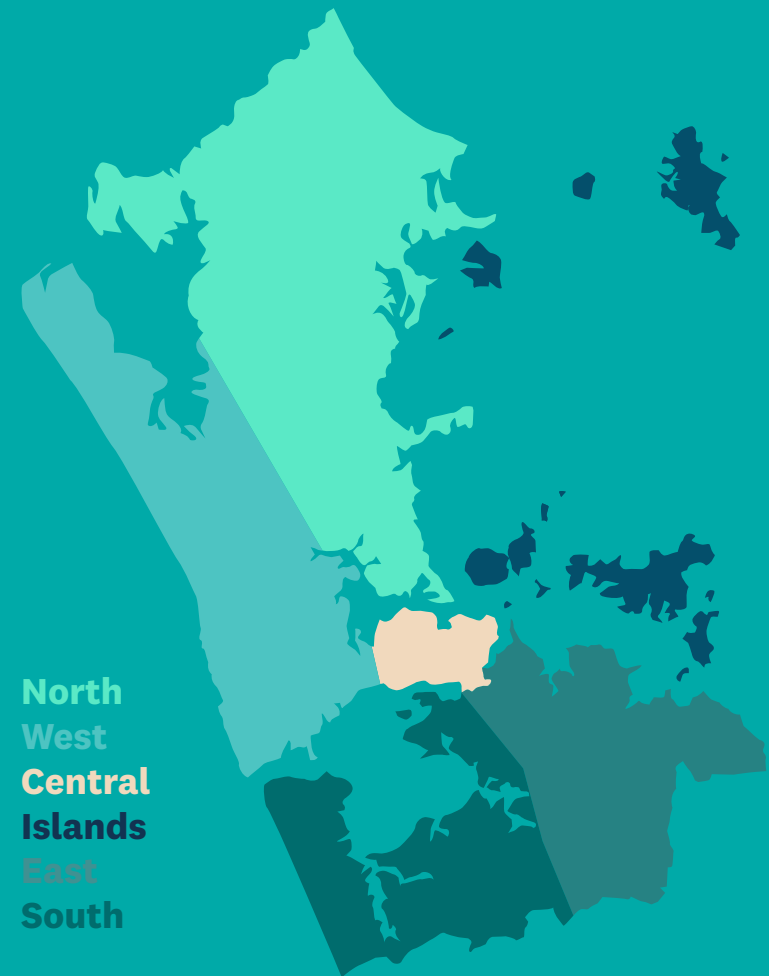


Auckland comprises **69% water and 31% land** mass, making it a desired region in New Zealand with a stunning blend of urban life and natural marine beauty.



ACCOMMODATION

Auckland's diverse accommodation ranges from international hotel brands and self-contained apartments to boutique lodges to suit any budget.



Airedale Boutique Suites

Auckland city centre



91

- 📍 380 Queen Street, Auckland 1010
- ☎ +64 9 374 1741
- ✉ AiredaleBoutiqueSuites@scenicgroup.co.nz
- 🌐 www.scenichotelgroup.co.nz/auckland/airedale-boutique-suites



Airedale Boutique Suites, on Queen Street in the heart of Auckland's theatre district, has undergone an extensive refurbishment, from the rooms, to public spaces and through to the restoration of the heritage facade.

This hotel embraces the history of this iconic Queen Street building to create something unique and authentic, combining the flair of art deco architecture with modern style and comfort.

Airedale is the newest member of the Legacy Collection, in Scenic Hotel Group's collection of unique, premium properties; each with their own story to share and their own legacy to leave.

Copthorne Hotel Auckland City

Auckland city centre



106

- 📍 150 Anzac Avenue, Auckland 1010
- ☎ +64 9 379 8509
- ✉ copthorne.aucklandcity@millenniumhotels.co.nz
- 🌐 www.millenniumhotels.com/en/auckland/copthorne-hotel-auckland-city



Simple, sophisticated, and designed for comfort. Copthorne Hotel Auckland City is centrally located, making it the perfect base to explore the city or attend conferences. Nearby you'll find Queen Street shopping, the Central Business District, and University of Auckland. The hotel is just a 10-minute walk away from the Viaduct Basin and Spark Arena.

All guest rooms and suites are equipped with soundproof 'hush windows' designed to ensure the utmost in privacy and comfort. Enjoy the beautiful seascape or city view from the in-room balconies.

Cordis, Auckland by Langham Hospitality Group

Auckland city centre



640

- 📍 83 Symonds Street, Auckland 1010
- ☎ +64 9 300 2868 or 0800 0 CORDIS
- ✉ cdakl.resv@cordishotels.com
- 🌐 www.cordishotels.com/auckland



Cordis, Auckland by Langham Hospitality Group is a luxurious hotel ideally located in the heart of the city, surrounded by vibrant cultural experiences. Featuring 640 modern rooms and suites, including the opulent Pinnacle Tower, it offers breathtaking views and exclusive amenities like the Club Lounge. Guests can enjoy diverse dining options at Eight Restaurant, Chandelier Lounge, and Our Land bar. With 18 versatile event spaces and a tranquil Chuan Spa, Cordis provides an exceptional stay that combines comfort, elegance, and access to Auckland's culinary delights.

Grand Millennium Auckland

Auckland city centre



452

- 71 Mayoral Drive, Corner Vincent Street, Auckland
- +64 9 366 3000
- grandmillennium.auckland@millenniumhotels.co.nz
- www.millenniumhotels.com/en/auckland/grand-millennium-auckland



Timeless Sophistication Meets Modern Comfort.

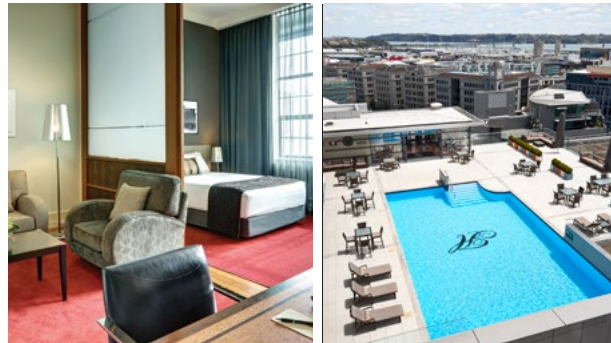
Relax in the city's largest standard rooms featuring deluxe bathroom suites and expansive windows that showcase stunning Auckland City views. Savour a range of flavours with four exceptional culinary experiences in the grand dining precinct, each designed to delight your palate. Enjoy the convenience of valet parking provided by our dedicated concierge team, or self-drive car parks. Our team is here to enhance your experience with personalised recommendations and assistance in booking local events and activities.

Heritage Auckland

Auckland city centre

167

- 35 Hobson Street, Auckland 1010
- +64 9 379 8553
- res.heritageakl@heritagehotels.co.nz
- www.heritagehotels.co.nz/heritage-auckland



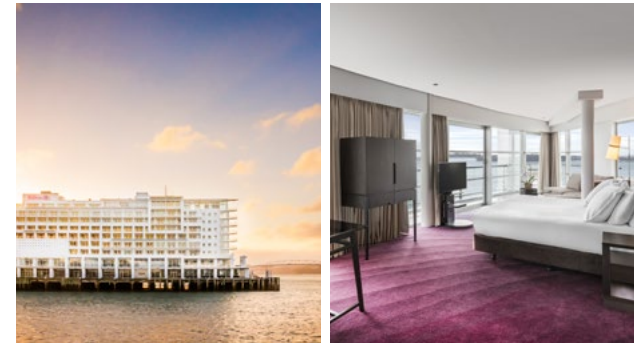
Heritage Hotel Auckland is recognised as a top-tier, resort-style accommodation in Auckland. Housed within the historical landmark of the Farmers Department store, it proudly operates one of the city's most well-known hotels. Guests can choose from a diverse range of accommodation options and conference facilities. For relaxation, visitors can enjoy a dip in one of the hotel's pools (rooftop and indoor lap), make use of multiple gyms, play tennis on-site, or dine at the international restaurant.

Hilton Auckland

Auckland city centre

187

- 147 Quay Street, Princes Wharf, Auckland 1010
- +64 9 978 2000
- reservations.auckland@hilton.com
- www.hilton.com/en/hotels/aklhihi-hilton-auckland



Perched at the edge of Princes Wharf, Hilton Auckland offers nautical-inspired design and breathtaking sea views. Relax in serene rooms, take a dip in the unique lap pool with an underwater viewing window, or explore downtown, just minutes away. Savour fresh New Zealand flavours at FISH Restaurant, unwind with cocktails at Bellini Bar, or host unforgettable events in one of our seven meeting rooms with natural light and open decks overlooking the water. With versatile spaces accommodating up to 750 guests, including private dining options, Hilton Auckland is the perfect choice for any occasion.

Horizon by SkyCity

Auckland city centre



303

- 85 Hobson Street, Auckland
- +64 9 363 6000
- info@horizonbyskycity.co.nz
- <https://horizonbyskycity.skycityauckland.co.nz>



In the heart of the city, Horizon by SkyCity offers a luxury experience.

Looking out, you'll get lost in the views of Auckland where cityscapes turn to landscapes. Inside, hints of Aotearoa are found in every corner of your spacious room, from local amenities to New Zealand art. Whether you're taking care of business or taking care of you, you'll find convenience, connection and comfort are all high on the menu. Conveniently connected to the SkyCity precinct by an airbridge, easy access to vibrant entertainment, attractions and award-winning dining options awaits.

Horizon by SkyCity is carefully considered and designed with you in mind.

Hotel DeBrett

Auckland city centre

24

- 2 High Street, Auckland 1010
- +64 9 925 9000
- reservations@hoteldebrett.com
- <https://hoteldebrett.com>



Located within the old-world charm of Auckland's High Street – just a short walk from the bustle of Britomart's shopping precinct, lower Queen Street and Auckland's iconic waterfront – lies the delightfully Art Deco styled Hotel DeBrett. The boutique Auckland hotel is home to 24 rooms – each with a distinct personality – a chic mix of mid-century modern furniture and New Zealand art, fused with contemporary comforts designed to tickle the senses.

Hotel Grand Chancellor Auckland

Auckland city centre

191

- 80 Wellesley Street West, Auckland 1010
- +64 4 494 8953
- reservations_auckland@grandchancellorhotels.com
- www.grandchancellorhotels.com/hotel-grand-chancellor-auckland



Experience the perfect blend of comfort and hospitality at Hotel Grand Chancellor Auckland. The hotel is strategically located in the heart of the city, near the New Zealand International Convention Centre, business districts, and vibrant restaurants and nightlife.

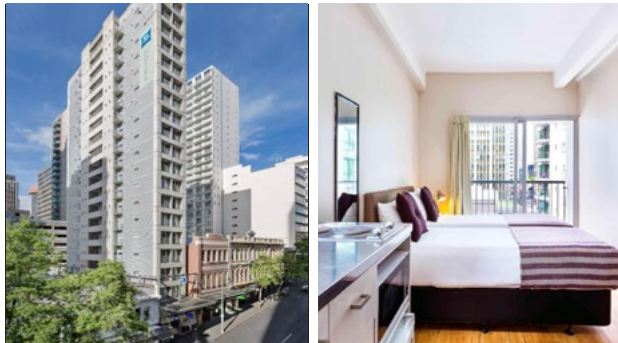
The inviting courtyard provides a peaceful retreat with a coffee and a bite to eat from our Nine Birds Café. The first floor Forester Bar & Grill restaurant serves a delicious breakfast buffet and à la carte dinner. With personalised service and a sophisticated boardroom that seats 16, it's the ultimate destination for both business and leisure travelers.

ibis Budget Auckland Central

Auckland city centre

 144

-  20 Wyndham Street, Auckland
-  +64 9 308 9140
-  h6487-fo@accor.com
-  <https://all.accor.com/hotel/6487/index.en.shtml>



Smart choice economy hotel, open to everyday adventurers.

A sensational location just off Queen Street, right amongst Auckland city's vibrant and active social scene. Providing guests with easy access to many of the best restaurants, bars and shops, as well as attractions including Sky City Entertainment complex, Viaduct Harbour and the Britomart precinct.

With its 144 great value rooms featuring balconies and some with kitchenette facilities, ibis Budget Auckland Central offers affordable compact comfort.

NEW!

Lylo

Auckland city centre

 104

-  54 Cook Street, Auckland CBD 1010
-  +64 9 379 6633
-  hi_auckland@lylo.com
-  www.lylo.com/auckland




Say hello to lower prices, higher comfort, and all the extras needed for a fun stay. Located in the heart of Auckland, LyLo offers three styles of accommodation: innovative private pod spaces, double rooms with shared facilities, and stylish en-suite rooms. The extensive multi-use spaces include the popular Miss Lucy's Restaurant and Bar, along with a large communal kitchen for guests to enjoy. LyLo is ideal for solo travellers, families, friends, and groups, featuring regular activities like yoga, quiz nights, bar crawls, karaoke nights, and more.

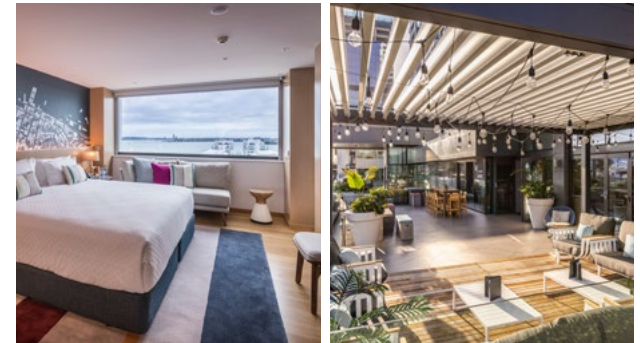
M Social Auckland

Auckland city centre



 190

-  196 - 200 Quay Street, Auckland 1010
-  +64 9 377 0349
-  msocial.auckland@millenniumhotels.co.nz
-  www.millenniumhotels.com/en/auckland/m-social-auckland/



A contemporary hotel for the curious, the explorers and those who thrive on new experiences. Functionally chic, this contemporary hotel features 190 rooms and suites designed for all travellers, all overlooking the vibrant Princes Wharf that is home to a stunning array of dining, entertainment and shopping experiences. Treat yourself to some of the best cuisine from around the world at 'Beast & Butterflies' - M Social's signature restaurant.

Catch up with friends - both old and new - over a drink at the Beast & Butterflies bar.

Mövenpick Hotel Auckland

Auckland city centre



207

📍 8 Customs Street East, Auckland

☎ +64 9 377 8920

✉ h1721-re1@accor.com

🌐 <https://movenpick.accor.com/en/australia-pacific/new-zealand/auckland/hotel-auckland.html>



Mövenpick Hotel Auckland, conveniently situated in the heart of Auckland's city centre and across from Commercial Bay, offers easy access to Britomart and the Viaduct Harbour, both just a two-minute walk away. The globally renowned brand, celebrated for its inviting hospitality and distinctive culinary expertise, ensures guests enjoy an indulgent stay with the distinctive Mövenpick touch.

Parkside Hotel & Apartments

Auckland city centre



60

📍 100 Greys Avenue, Auckland CBD

☎ +64 9 375 1800

✉ info@parksidehotel.co.nz

🌐 www.parksidehotel.co.nz



It is your home away from home, where you are guaranteed a warm welcome and a comfortable stay in the heart of the city. Parkside Hotel & Apartments offers a range of accommodations, from deluxe rooms to penthouse suites, suitable for couples, solo travelers, and families. All Deluxe rooms and Suites feature a kitchenette, washing machine/dryer, complimentary Wi-Fi, Google Chromecast, and a private balcony.

Pullman Auckland Hotel & Apartments

Auckland city centre



324

📍 Corner of Waterloo Quadrant & Princes Street, Auckland 1010

☎ +64 9 353 1000

✉ reservations@pullmanauckland.co.nz

🌐 www.pullmanauckland.co.nz



Pullman Auckland Hotel & Apartments is conveniently situated in the heart of the city. With 324 comfortable rooms, spacious suites and self-contained apartments offering views of the Waitemata Harbour and of the historic Albert Park, the hotel is the perfect place for a city stay. Relax by the 25m heated indoor lap pool, reset with a massage at Luxe Spa, meet colleagues in Tapestry Grill & Bar, be inspired in one of our 16 event spaces.

QT Auckland

Auckland city centre



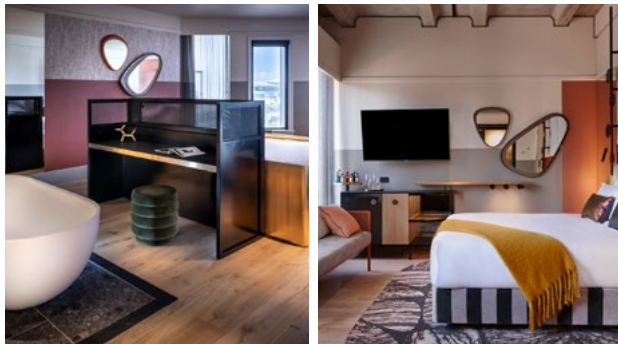
150

4 Viaduct Harbour Avenue, Auckland 1010

+64 9 379 9123

reservations_QTAuckland@evt.com

www.qthotels.com/auckland



From the moment guests enter the hotel, they enjoy a quintessentially QT Auckland experience accompanied with QT quirk. The QT Auckland team are known for delivering QT's signature 'Unexpected and Unrequested' service, where guests might experience surprises such as personalised amenity.

The high standard of food and beverage venues are a destination in themselves. Esther, the hotel's award-winning restaurant led by renowned chef Sean Connolly, is inspired by the Mediterranean, evoking the warmth of being in someone's kitchen with a side of theatrical flair. On the 6th floor, guests will find Rooftop at QT, an elevated rooftop bar with views out over the harbour and a world-class drinks list.

Location is everything at QT Auckland. Guests can experience the very best of Auckland's lifestyle at their fingertips, with the vibrant Viaduct Harbour dining destination, Commercial Bay and Britomart retail precincts minutes away.

Rydges Auckland

Auckland city centre



267

59 Federal Street Auckland 1010

+64 9 375 5900

reservations_rydgesauckland@evt.com

<https://www.rydges.com/accommodation/new-zealand/auckland>



Nestled in the vibrant heart of Auckland's central business district, Rydges' hotel location serves as an ideal starting point for city exploration, granting easy access to Auckland's most celebrated attractions.

The stylishly appointed rooms offer both comfort and modern conveniences, ensuring a serene retreat for guests. Some rooms feature stunning views of the iconic Sky Tower, while those in Harbour View rooms can enjoy breathtaking panoramas of the Auckland Harbour Bridge and the picturesque Waitemata Harbour.

For a dining experience within reach, the onsite steakhouse, The CUT Restaurant & Bar, offers a meticulously selected menu showcasing the finest cuts and an exquisite wine list, promising guests a memorable gastronomic journey without ever needing to leave the comfort of the hotel.

SkyCity Hotel

Auckland city centre



320+

Corner Victoria and Federal Streets, Auckland

+64 9 363 6000

hotelreservations@skycity.co.nz

<https://skycityhotel.skycityauckland.co.nz>



SkyCity Hotel. Everything's right here.

Escape to a hotel where exceptional experiences happen every day. A place where you can enjoy genuine Kiwi hospitality and modern, spacious accommodation.

A choice of beautifully appointed premium king, twin rooms and premium suites are on offer, alongside family suite options.

Explore the sights and sounds of vibrant Auckland, including the iconic Sky Tower. Pamper yourself at rejuvenating spa facilities. Experience magnificent dining with over 15 restaurants and bars close by, not to mention theatres and the exciting SkyCity Casino.

Relax and refresh with their world-class facilities and services, where your comfort is the priority.

SO/ Auckland

Auckland city centre



130

Corner of Customs Street East and Gore Street, Auckland Central

+64 9 379 1860

h9149@so-hotels.com

<https://so-hotels.com/en/auckland>



A bold statement in the central Britomart precinct, SO/ Auckland gloriously presides over the urban designer quarter to bestow uninterrupted views across the sparkling waters of Waitematā Harbour. Harbour Society serves reimagined Asian-inspired dishes with exceptional views of the Waitematā Harbour and Auckland skyline. Javalab Café blends the art of French patisserie with artisan coffee. Enjoy a sip of cocktail and live music at the MIXO lobby bar or HI-SO rooftop bar, in the glamour of the highest class.

Sofitel Auckland Viaduct Harbour

Auckland city centre



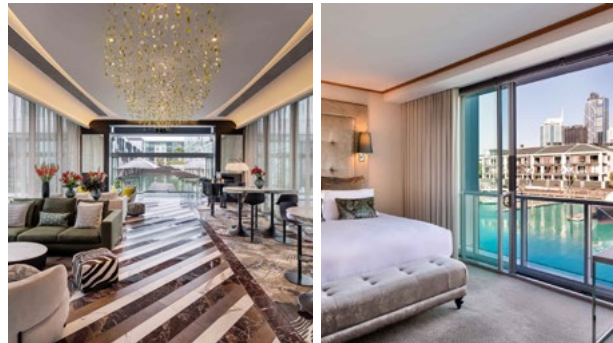
90

21 Viaduct Harbour Avenue, Auckland 1010

+64 9 909 9000

h8577-re1@sofitel.com

www.sofitel-auckland.com



Experience the very best of modern luxury at Sofitel Auckland Viaduct Harbour. Here you can indulge in a decidedly chic encounter that combines the spirit of the Viaduct Harbour location with the French Art de Vivre.

Authentic and lively culinary experiences are met in the hotel's signature restaurant La Marée, soothing wellness journeys in Sofitel Spa, and exquisitely designed meeting spaces that exude chic design with a French touch.

NEW!

SOHO Hotel

Auckland city centre

126

180 Stoddard Road, Mount Roskill, Auckland

+64 9 320 1796

stay@sohoauckland.com

www.soholuxuryhotels.com



Set alongside Mount Roskill/Puketāpapa and drawn inspiration from art deco. Soho Hotel Auckland is just 15 minutes from both the city centre and from the airport, the location offers the ideal meeting point for business or pleasure. Extensive dining and conference options available, complemented by great onsite facilities. All rooms feature contemporary furnishings with plenty of natural light.

Sudima Auckland City

Auckland city centre



186

- 63-67 Nelson Street, Auckland Central 1010
- +64 9 905 1719
- reservations@sudimahotels.com
- www.sudimahotels.com/en/our-hotels/auckland-city



Sudima Auckland City is a new hotel conveniently located within easy walking distance of the city's bustling shopping, arts, dining and entertainment precincts, making it the perfect base to explore the city from or launch your holiday adventure or business trip. Contemporary Sudima Auckland City features well-appointed rooms, many with city or harbour views, highly regarded modern-Asian plant-based restaurant East and popular rooftop bar Sunset with its sweeping views of the upper harbour and out to the Waitakere Ranges. With its urban fit-out and world class facilities and services, it represents style, comfort and great value.

The Grand by SkyCity

Auckland city centre



312

- 90 Federal Street, Auckland
- +64 9 363 6000
- reservations@skycity.co.nz
- <https://thegrandbyskycity.skycityauckland.co.nz>



In the heart of the city, is a sanctuary.

A lavish hideaway resting high above the bustling night life of the city streets and SkyCity entertainment precinct below.

A place of understated luxury, bursting with warmth, where those seeking excitement can revel in the elegant sophistication of this uniquely intimate refuge. The Grand is large scale with 312 rooms, an indoor lap pool, sauna and spa. Three award-winning restaurants including the new 'Metita' are within the hotel for round the world dining options.

Here is where opulence and elegance meet.

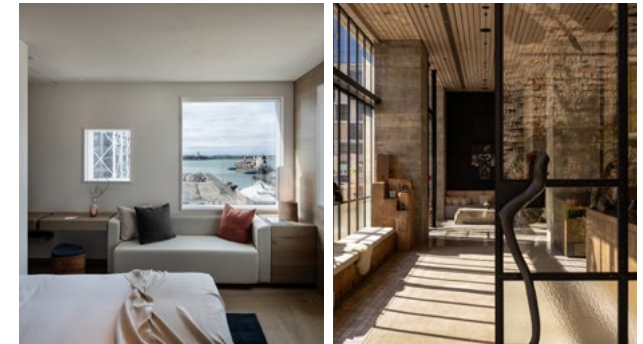
The Hotel Britomart

Auckland city centre



104

- 29 Galway Street, Britomart, Auckland 1010
- +64 9 300 9595
- reservations@thehotelbritomart.com
- <https://thehotelbritomart.com>



Smart, soulful and contemporary, The Hotel Britomart welcomes guests to the best of downtown waterfront Auckland. New Zealand's first Five Green Star hotel has beautiful timber-lined, cocoon-like rooms with elegantly tiled bathrooms, built-in sofas and hand-made ceramics.

Downstairs, the historic warehouses of the Britomart neighbourhood house some of the country's best restaurants, bars and cafes, while plant-lined pedestrian streets and laneways are full of incredible shopping. Just a few steps away is Auckland's beautiful waterfront, the ferry terminal and central business district, while the underground Britomart Transport Centre offers easy public transport connections to every part of the city.

The Sebel Auckland Viaduct Harbour

Auckland city centre



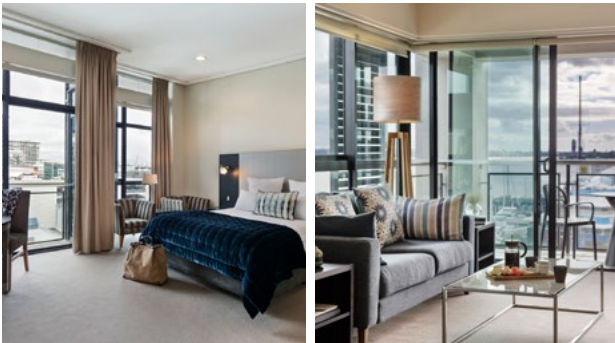
110

📍 85 Customs Street West, Auckland Central

☎ +64 9 978 4000

✉ h8759@accor.com

🌐 <https://all.accor.com/hotel/8759/index.en.shtml>



Featuring spacious, stylishly appointed city view studios and one-bedroom suites, guests can enjoy both the independence of contemporary apartment style living and the convenience of our hotel.

The Sebel Auckland Viaduct Harbour provides extensive views of the marina and the city.

The finest bars and restaurants, cafés, shops, transportation hubs and numerous leisure activities are all on your doorstep.

The Sebel Quay West Auckland

Auckland city centre



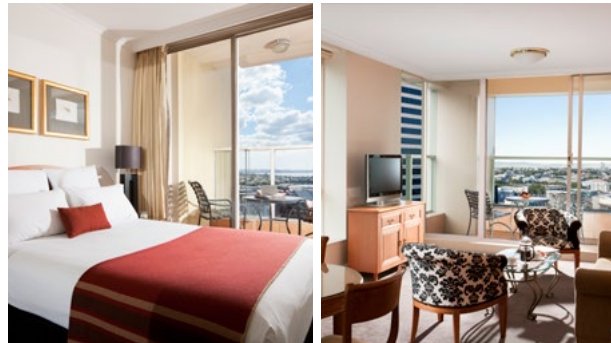
36

📍 8 Albert Street, Auckland Central

☎ +64 9 309 6000

✉ h8802@accor.com

🌐 <https://all.accor.com/hotel/8802/index.en.shtml>



The Sebel Quay West Auckland is ideally located in the very heart of Auckland City, within easy walking distance of the vibrant cafes & restaurants situated on the edge of the Viaduct Harbour. An exclusive boutique style apartment style suites featuring spacious living spaces, a relaxing indoor heated pool and spa, plus car parking.

Experience urban Auckland with an array of markets, international and artisan food stores, gathering the best of local produce to enjoy at leisure in the comfort of beautifully appointed one- and two-bedroom suites with complete with full kitchen, laundry facilities and private balconies offering views of Waitamatā Harbour and the city's skyline.

Voco Auckland City Centre

Auckland city centre



201

📍 9 Wyndham Street, Auckland

☎ +64 9 883 2900

✉ res.aklcn@proinvesthotels.com

🌐 <https://auckland.vocohotels.com>



Everything guests need for a stay in Auckland can be found at voco™ Auckland City Centre. The hotel offers the renowned Kiwi charm in abundance—from attentive, thoughtful hosts to spacious rooms and suites that make guests feel right at home.

Committed to sustainability, voco™ Auckland City Centre is thoughtfully designed to minimise environmental impact, featuring eco-conscious amenities and facilities throughout.

Elevated among the beating heart of Auckland in the bustling centre of town, guests can explore nearby popular attractions.

Waipuna Hotel & Conference Centre

Auckland city centre



148

- 58 Waipuna Road, Mount Wellington, Auckland 1060
- +64 9 526 3000
- res@waipunahotel.co.nz
- www.waipunahotel.co.nz



Waipuna Hotel offers guests a range of excellent facilities, including free off-street parking, complimentary internet, an onsite restaurant and bar, as well as a swimming pool, spa, and gymnasium. Nestled on a beautiful tidal lagoon with scenic walkways and cycle paths, it's the perfect blend of relaxation and convenience. Located just 15 minutes from the city centre and the airport, guests can enjoy a peaceful setting while staying close to the city's main attractions.

Heartland Hotel Auckland Airport

Auckland airport



141

- 14 Airpark Drive, Airport Oaks, Auckland 2022
- +64 9 275 4540
- airportrm@heartlandhotels.co.nz
- www.scenichotelgroup.co.nz/auckland/heartland-hotel-auckland-airport



Heartland Hotel Auckland Airport is located just three kilometres from Auckland Airport and within close proximity to downtown Auckland and the vibrant Manukau City, making it a great place to base yourself if you are travelling on business or visiting Auckland for leisure. The complimentary 24/7 airport shuttle can pick your clients up from the airport or drop off at either the domestic or international terminals. Short and long term car parking is also available.

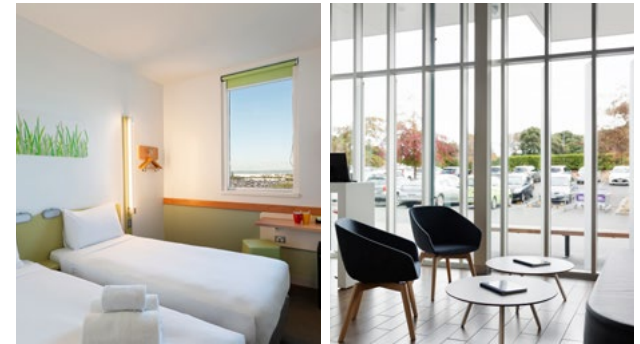
ibis Budget Auckland Airport

Auckland airport



198

- 2 Leonard Isitt Drive, Auckland Airport
- +64 9 255 5152
- H7865-RE@accor.com
- <https://all.accor.com/hotel/7865/index.en.shtml>



Smart choice economy hotel, open to everyday adventurers.

ibis budget Auckland Airport is the economy option in the airport vicinity which boasts all the essentials for a short stopover. Featuring black-out blinds, 24hr reception, complimentary onsite parking and airport shuttle (charge apply).

With 198 bright, modern rooms and a fun, urban design, ibis budget Auckland Airport Hotel offers value and convenience for every traveller.

Located only a short walk way from Auckland domestic and international terminals and a 20 minute drive from the city, avoid the last-minute rush and stress of travel - sleep longer and save more.

Novotel Auckland Airport

Auckland airport



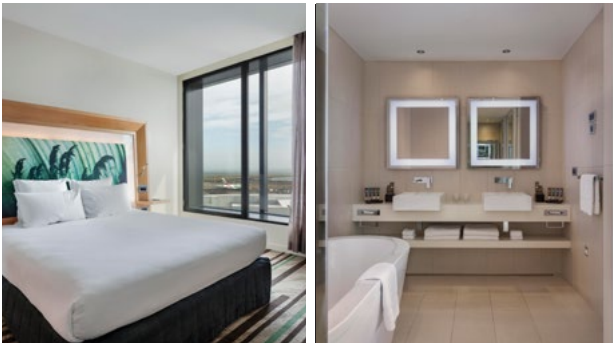
263

📍 Auckland International Airport,
Ray Emery Drive, Auckland 2022

☎ +64 9 257 7200

✉ h7485-re1@accor.com

🌐 <https://all.accor.com/hotel/7485/index.en.shtml>



Enjoy comfort and convenience at Novotel Auckland Airport, located at the doorstep of the International terminal. Full-length soundproof windows give your stylish room natural light plus peace and quiet. Experience THIRTEEN50 Bistro & Bar, a modern open space that welcomes both hotel guests and local visitors. Touches of tradition blend naturally with contemporary flair to create a space that evokes classic Kiwi fare with a twist of local, fresh and comfort.

Located outside the international terminal, Novotel Auckland Airport Hotel takes the stress out of layovers and business trips while offering the highest standard in comfort and hotel amenities.

Pullman Auckland Airport

Auckland airport



311

📍 37 Tom Pearce Drive, Auckland Airport

☎ +64 9 256 7901

✉ hA8u9-re@accor.com

🌐 <https://all.accor.com/hotel/A8U9/index.en.shtml>



Te Arikini Pullman Auckland Airport boasts contemporary designed guest rooms and suites offering relaxing respite. The elevated top floor dining experience, Te Kaahu, has spectacular runway views and out to the Manukau Heads. Kuriri Café on the ground floor welcomes everyone to enjoy an espresso, lunch or grab a snack to go. State of the art boardroom spaces are located on the hotel's top floor. Unleash your athletic energy at the Pullman Power Fitness gym.

Sudima Auckland Airport

Auckland airport



153

📍 18 Airpark Drive, Mangere, Auckland 2022

☎ +64 9 551 8888

✉ reservations@sudimahotels.com

🌐 www.sudimahotels.com/en/our-hotels/auckland-airport



Sudima Auckland Airport is an award winning hotel set in a quiet location 2.5kms from New Zealand's main airport. It is a Toitū Carbonreduce Certified hotel and exemplifies the best in sustainable architecture and systems, along with world class features, facilities and services.

Sudima Auckland Airport features well-appointed rooms, restaurant, bar, indoor heated pool, gym, free parking and is the perfect location if transiting through the airport on holiday or for business in the airport region. With its modern fit-out, facilities and services it represents comfort and value.

Delamore Lodge

Waikeke Island



6

📍 83 Delamore Drive, Oneroa, Waiheke Island 1081

☎ +64 9 372 7372

✉ reservations@delamorelodge.com

🌐 www.delamorelodge.com



A luxurious lodge on Auckland's Waiheke Island – the jewel in Auckland's stunning Hauraki Gulf. Just a 35-minute ferry ride or 5 minute helicopter flight from downtown Auckland, Waiheke is a favourite destination for lovers of luxury travel.

Delamore Lodge is built cliffside with commanding views overlooking Owhanake Bay, offering superior facilities, first-class service and delicious dining. Inspired by the Mediterranean with a unique New Zealand flavour, this elegant and exclusive luxury lodge is designed in the shape of a traditional Maori fish hook (Matau) and is literally moulded into the hillside.

ibis Auckland Ellerslie

Ellerslie



100

📍 72-112 Greenlane East, Auckland

☎ +64 9 529 9090

✉ h3060-re2@accor.com

🌐 <https://all.accor.com/hotel/3059/index.en.shtml>



Conveniently located in the small but vibrant suburb of Ellerslie - New Zealand's home of thoroughbred racing - ibis Auckland Ellerslie is positioned between the airport and central business district. An ideal base for those seeking a relaxed retreat from the city centre but still close to local attractions, Ellerslie offers its own unique shopping and dining experiences. A 15-minute drive will see you taking in waterfront views of Waitemata Harbour.

Stay close to the city with easy motorway and rail access. Featuring 100 modern accommodation rooms, gymnasium, restaurant, outdoor garden bar and adjacent to the Novotel Auckland Ellerslie.

Novotel Auckland Ellerslie

Ellerslie



147

📍 72-112 Greenlane East, Auckland

☎ +64 9 529 9090

✉ h3060-re2@accor.com

🌐 <https://all.accor.com/hotel/3060/index.en.shtml>



Novotel Auckland Ellerslie is conveniently located between the airport and the city centre - making it an ideal hotel option for business travellers, or those wanting to stay away from the busy city while remaining close to local attractions and amenities. Ellerslie, just a short drive from Auckland city and Auckland Harbour, Go Media Stadium, Sylvia Park Shopping Centre and Spark Arena, and a range of high street shopping precincts.

Enjoy access to fully-equipped fitness centre, stylish bar with big screens, and modern restaurant with indoor and al fresco dining in a tranquil garden.

Omana Luxury Villa

Waiheke Island



XX

📍 379D Gordons Road, Woodside Bay Road, Waiheke Island 1971

☎ +64 2 181 1707

✉ omana@omanaluxuryvilla.com

🌐 www.omanaluxuryvilla.com



Discover the luxury of abundance at Omana Luxury Villa. This boutique accommodation on Waiheke Island is perfect for couples and individuals seeking nature and privacy. Four luxury villas offer breathtaking views of a crescent-shaped private beach, accessible via a short bush walk or quick drive. Each villa features a spacious indoor environment, floor-to-ceiling windows, and a generous balcony, providing a sense of abundance. This eco-luxury retreat seamlessly integrates with its natural surroundings, offering top-notch amenities and spectacular forest and ocean views.

PurePod - Rewarewa

Helensville



1

📍 2191 State Highway 16, Helensville 0875

☎ +64 21 630 460

✉ reservations@purepods.com

🌐 www.purepods.com/location/rewarewa/



Rewarewa PurePod offers a truly unforgettable experience, immersing guests in nature's embrace while ensuring absolute privacy and seclusion only 40 minutes drive from the city centre. A glass cabin complete with glass roof and surrounded by ancient native trees overlooking protected bush, providing a serene retreat. Explore this awe-inspiring farm to finally walk across the paddock where your PurePod is revealed. Relish in the evening hues of the sunset and drift off to sleep to the melodic songs of birds nestled nearby.

Rydges Formosa Golf Resort

Beachlands



50

📍 110 Jack Lachlan Drive, Beachlands, Auckland

☎ +64 9 218 3870

✉ reservations_rydgesformosa@evt.com

🌐 www.rydges.com/accommodation/new-zealand/formosa-golf-resort



Rydges Formosa Golf Resort offers a coastal escape that seamlessly combines the indulgent pleasures of an idyllic waterfront setting with a premium 18-hole championship golf course, masterfully crafted by the esteemed Sir Bob Charles, a renowned New Zealand professional golfer.

Guests embrace an unmatched experience that seamlessly blends comfort and captivating surroundings. Nestled along the scenic Pohutukawa Coast, 40 minutes southeast of Auckland's vibrant heart, the resort offers a rejuvenating escape that's more than a possibility – it's a promise.

Perched on a clifftop, the resort boasts sweeping views of the Hauraki Gulf, encompassing Waiheke Island, Rangitoto Island, and the Coromandel Peninsula.

The Sebel Auckland Manukau

Manukau



152

📍 16 Lakewood Court, Manukau City, Auckland 2104

☎ +64 9 261 1821

✉ ha8q4@accor.com

🌐 <https://all.accor.com/hotel/A8Q4/index.en.shtml>



Nestled in the heart of Manukau, just a 15-minute drive from Auckland Airport and within walking distance of Rainbow's End, The Sebel Manukau is a perfect base for business and leisure travellers.

Relax in contemporary studio and apartment-style rooms, thoughtfully designed with modern furnishings for comfort. Ideal for short and long-term stays, the apartments include fully equipped kitchens, creating a true home away from home. Discover Ora Bistro Restaurant & Bar, serving modern global bistro fare in a stylish yet relaxed setting, perfect for any occasion.

Woodhouse Mountain Lodge

Matakana



18

📍 471 Wyllie Rd, Kourawhero, Warkworth
Auckland 0981

☎ +64 9 425 9336

✉ stay@woodouselodge.nz

🌐 <https://woodouselodge.nz>



Woodhouse Mountain Lodge covers over 100-acres of outstanding natural landscape, at the heart of the Matakana Coast, approximately 50 minutes north of Auckland Central. The 18 Private Villas are located close to all on-site facilities, providing guests with the perfect mix of seclusion and convenience.

Each villa comes with an exquisite bathroom with a bath for two, a comfortable lounge and study area, mini-bar, Nespresso machine, gas fire, outdoor seating area and luxury bedding to ensure a deep and restful night's sleep.

The villas are TV free, enabling guests to relax and enjoy the serenity of the Kourawhero Estate surroundings.



A C T I V I T I E S & A T T R A C T I O N S

With lively urban precincts and a stunning natural playground so close together, it's easy to hop from one adventure to the next. From sailing and dolphin spotting out on the water to the city's galleries, museums and exciting attractions, Auckland has all the ingredients for a perfect tailor-made holiday.

Auckland Bridge Climb & Bungy by AJ Hackett Bungy

Auckland city centre

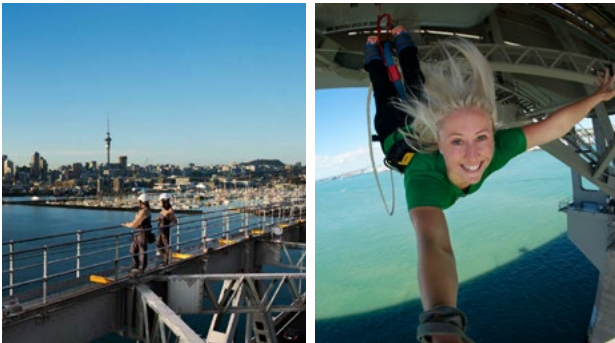


📍 105 Curran Street, Westhaven Reserve, Herne Bay

☎ +64 9 360 7748

✉ aucklandbungy@bungy.co.nz

🌐 www.bungy.co.nz



In the country of adventure tourism, Auckland offers the most thrilling experience you can get! The only bungy jump in New Zealand above the ocean, where you can even touch the water.

AJ Hackett Bungy NZ will take you under, up and over to the summit of the iconic Harbour Bridge. The Bridge Climb is a fully guided tour recommended to all ages and fitness levels. Learn about the history of the bridge and important features of the city from well-trained guides.

All Blacks Experience

Auckland city centre



📍 SkyCity Precinct – 88 Federal Street, Auckland

☎ +64 9 281 0025

✉ reservations@experienceallblacks.com

🌐 www.experienceallblacks.com



This full sensory, interactive experience allows visitors to connect with New Zealand and Māori art and culture, learn what makes the silver fern an revered emblem around the world, hear from legends and gain insights into Kiwi lifestyle, attitude and humour.

Visitors are introduced to unique taonga (treasures) including the All Blacks Mauri stone, a greenstone gifted to the team by Ngāi Tahu.

The All Blacks Experience is the ideal introduction for international visitors on their arrival to New Zealand. Through the lens of the All Blacks, celebrate and share the unique Kiwi culture, and experience the most incredible Haka performance.

Auckland Art Gallery

Auckland city centre



📍 Wellesley Street E Corner Kitchener, Auckland Central 1010

☎ +64 9 307 7700

✉ gallerytours@aucklandartgallery.com

🌐 www.aucklandartgallery.com



With a collection of more than 17,000 artworks, Auckland Art Gallery Toi o Tāmaki is New Zealand's largest and most inspiring visual arts experience. The collection includes major holdings of New Zealand's historic, modern, and contemporary art, alongside outstanding works by Māori and Pacific artists.

Private tours are available in English and Mandarin.

Auckland Museum

Parnell



📍 The Auckland Domain Parnell, Auckland

☎ +64 9 306 7048

✉ bookings@aucklandmuseum.com

🌐 www.aucklandmuseum.com



Housed in one of NZ's finest heritage buildings, Auckland Museum is the cultural and spiritual touchstone for the many communities that inhabit this beautiful land, and the first stop for anyone wishing to gain an insight into New Zealand and its peoples. Priceless Māori and Pasifika treasures, amazing natural history, and a variety of new special exhibitions, events, and performances.

Tāmaki Paenga Hira is Auckland's War Memorial Museum, home to an ongoing remembrance of New Zealand's service personnel. The Museum is also NZ's oldest research institution, actively contributing to societal and environmental understanding.

Auckland Sea Kayaks

Auckland city centre



📍 Waitemātā Harbour, Auckland City Centre

☎ +64 9 213 4545

✉ info@aucklandseakayaks.co.nz

🌐 www.aucklandseakayaks.co.nz



Auckland Sea Kayaks offers diverse guided kayaking adventures in Auckland's Hauraki Gulf Marine Park, ranging from half-day to multi-day trips. These experiences provide a quick escape from the city to explore volcanoes, islands, and unique marine wildlife.

New for 2024, the 2-hour City Lights Tour lets you paddle by night around Auckland's Viaduct Harbour and alongside the iconic Harbour Bridge, offering stunning views of the illuminated Sky Tower and Vector light shows. Other popular tours include the Sunset Sea Kayak to Rangitoto, the largest of Auckland's volcanoes, along with options like the Riverhead "Paddle to the Pub" and the Motukorea/Brown Island adventure. Private tours in Mandarin are also available.

Cruise New Zealand

Auckland city centre

📍 117B Customs Street West, Auckland Viaduct Harbour

☎ +64 21 039 7031

✉ info@cruisenzeland.co.nz

🌐 www.cruisenzeland.co.nz



Cruise New Zealand operates a range of high-end luxury charter catamarans.

Step aboard and enjoy an unforgettable cruise with a variety of land and water-based activities accompanied by a delicious meal and beverages. Specialising in high end FIT, group, incentive, corporate and client entertainment. Cruise New Zealand provides the ultimate on water experience.

Explore Group Cruises

Auckland city centre



📍 Explore booking kiosk, Auckland Viaduct, Quay Street, Auckland 1010

☎ 0800 397 567

✉ nfo@exploregroup.co.nz

🌐 www.exploregroup.co.nz



Discover Tikapa Moana, the Hauraki Gulf, with Explore's range of unique cruising experiences. Visitors can take a cruise through the islands to spot the diverse marine wildlife, including whales and dolphins, that call Tikapa Moana home. Escape to nature and explore the native forest and wildlife at either Tiritiri Matangi or Rotoroa Island sanctuaries, or visit New Zealand's only beachfront cellar door & restaurant at Man O' War, Waiheke Island. Explore has something for everyone to get out on the water and experience the beauty of Auckland's beautiful, big, blue backyard.

Explore Group Sailing

Auckland city centre



📍 Explore booking kiosk, Auckland Viaduct, Quay Street, Auckland 1010

☎ 0800 397 567

✉ nfo@exploregroup.co.nz

🌐 www.exploregroup.co.nz



The team at Explore take immense pride in Auckland and its harbour and are ready to show visitors around. With extensive knowledge and enthusiasm, Explore delivers unique experiences that truly showcase the destination and their sailing experiences have become an Auckland 'must do'.

Visitors can take the helm and participate as crew on an actual America's Cup race yacht, enjoy a three-course dinner on an intimate cruise around the Waitematā Harbour, or simply sit back and relax as they sail under the Harbour Bridge and take in the city highlights from the water.

New Zealand Maritime Museum

Auckland city centre



📍 Corner Hobson and Quay Street, Viaduct Harbour, Auckland

☎ +64 9 373 0800

✉ info@maritimemuseum.co.nz

🌐 www.maritimemuseum.co.nz



The New Zealand Maritime Museum - *Hui Te Ananui a Tangaroa* - is where the tales of people and the sea come alive. Through five permanent exhibitions, the museum celebrates our rich maritime heritage, offering narratives into our relationship with the sea, from the Great Pacific Migration a thousand years ago to modern innovations seen in the America's Cup and contemporary yachting.

Embark on a journey across the sparkling waters of the Waitematā Harbour aboard the museum's heritage vessel, Ted Ashby. Indulge in drinks and canapés while experiencing a private tour, immersing yourself in the charm of Auckland's sailing culture with panoramic views of the city.

Power to the Pedal

Auckland city centre



- 📍 99 Halsey Street, Auckland 1010
- ☎ +64 21 082 94218
- ✉ Info@powertothe pedal.com
- 🌐 www.powertothe pedal.com



Embark on a journey through Auckland with Power to the Pedal's highly-rated, guided electric bike tours. Glide effortlessly along and discover the highlights of this amazing city using the award-winning cycleway network. With a focus on sustainable tourism, Power to the Pedal provides a zero-emission way to explore Auckland. Their guides are 100% local and love to explain what makes Auckland such a fantastic place to live and ride a bike.

SkyJump & SkyWalk by AJ Hackett

Auckland city centre



- 📍 SkyCity precinct – Corner of Victoria and Federal Streets, Auckland
- ☎ +64 9 360 7748
- ✉ skyjump@bungy.co.nz
- 🌐 www.bungy.co.nz



Ready to stand 192m above the ground at New Zealand's tallest building? Take the epic way down doing the SkyJump or enjoy 360° views of Auckland City as you walk on a platform with no handrails. The SkyWalk is an incredible experience, where our guides will point out landmarks and challenge you to step out of your comfort zone with a few fun 'tasks'. The SkyJump offers a controlled descent with a soft landing, different from a bungy jump – but don't worry, no one in New Zealand jumps from a higher point than this!

Sky Tower

Auckland city centre



- 📍 Corner Victoria and Federal Streets, Auckland
- ☎ +64 9 363 6000
- ✉ skytower@skycity.co.nz
- 🌐 <https://skycityauckland.co.nz/sky-tower>



It's hard to imagine an Auckland skyline without the iconic Sky Tower. This magnificent 328m high structure has been the focal point of beautiful Tāmaki Makaurau, rising up out of the land to delight locals and visitors alike. Take time to discover the full story of this incredible feat of modern engineering – its pioneering past, colourful present and visionary future.

Join them above the clouds to experience three viewing platforms all with incredible 360° views of Tāmaki Makaurau, taking in ancient volcanoes, sparkling sunlit harbours and beyond. And if breath-taking panoramas aren't enough to excite you, indulge in New Zealand's highest bar, interactive installations, or adrenaline-fueled activities.

You haven't seen Auckland, until you've seen it from the top.

The Art Tour Guide

Auckland city centre

- 📍 1 Ponsonby Road, Grey Lynn, Auckland 1012
- ☎ +64 21 509 093
- ✉ glen@thearttorguide.com
- 🌐 www.thearttorguide.com



Discover Auckland's art, culture and creativity with The Art Tour Guide. Tailoring journeys with our people, places and spaces at its centre, these guided experiences explore local galleries, street art, and places of interest.

Thrillzone / Escape Quest

Auckland city centre and Takapuna



- 📍 Ferry Building – 99 Quay Street, Auckland City Centre & Level 1, 28 Hurstmere Road, Takapuna
- ☎ +64 9 486 0773
- ✉ hello@thrillzone.co.nz
- 🌐 www.thrillzone.co.nz



Looking for adrenaline-packed entertainment? This Auckland destination offers heart-pounding indoor and outdoor adventures, perfect for group bookings and team events. Specialising in unforgettable experiences, it provides thrilling activities that go beyond the ordinary.

Corporate teams can break free from the office with activities that spark creativity, strengthen bonds and build skills. From immersive escape rooms to tactical Laser Tag, team building becomes an exciting adventure.

With real-crime-inspired escape rooms, outdoor challenges, cutting-edge Virtual Reality, and fast-paced competitions, participants leave with lasting memories and a sense of achievement.

Wētā Workshop Unleashed

Auckland city centre



- 📍 Level 5, 88 Federal Street, SkyCity, Auckland 1010
- ☎ +64 4 909 4035
- ✉ bookings@wetaworkshop.co.nz
- 🌐 <https://tours.wetaworkshop.com/unleashed>



Lights, camera, action! Experience Wētā Workshop Unleashed at SkyCity. An award-winning 90-minute guided tour through the immersive and extraordinary world of movie-making – monsters, giants, robots and more!

On a tour, you'll explore three movie projects imagined by the Wētā Workshop crew and discover how they bring big screen concepts to life.

Journey into the heart of movie creativity, from storyboarding to special effects, design to the director's chair. The crew will take you on an immersive adventure through the creative process of making movies where you can discover their ideas vault, step onto film sets, handle props and play with practical effects for a truly interactive experience.

Brick Bay Wines & Sculpture Trail

Matakana



📍 17 Arabella Lane, Snells Beach 0982

☎ +64 9 425 4690

✉ glasshouse@brickbay.co.nz

🌐 www.brickbay.co.nz



On the coast in the Matakana Wine Region, Brick Bay spans 200 acres, featuring a boutique vineyard and an extensive outdoor sculpture trail. The trail showcases large-scale contemporary New Zealand sculptures against the backdrop of a picturesque natural environment filled with native bush and wildlife. The sculpture trail is an approximately one-hour walk, offering a unique and immersive experience.

Experience The Glass House restaurant, perched over a shimmering lake, offering lunch services that showcase the freshest New Zealand seasonal cuisine, drawing inspiration from the onsite farm produce, orchards, and gardens.

Matakana Village

Matakana

📍 2 Matakana Valley Rd, Matakana

✉ marketing@matakanavillage.co.nz

🌐 www.matakanavillage.co.nz



Discover the charm of Matakana Village, a picturesque destination that captures the essence of Aotearoa's vibrant community spirit and artisanal craftsmanship. On Saturdays, the renowned Matakana Village Farmers' Market comes alive, offering a bounty of fresh, locally sourced produce, gourmet delights, and handcrafted goods. Visitors engage with friendly local vendors, savour organic and artisanal treats, and soak in the lively atmosphere amidst live music and the lush green setting.

Matakana's allure extends beyond the market days. Open seven days a week, the Village invites visitors to explore its unique boutiques, art galleries, and cafes. Whether it's a leisurely stroll through shops showcasing local artisans, a cozy coffee break, or a cinematic escape in the boutique cinema, Matakana Village promises a delightful experience for every visitor, any day of the week.

EcoZip Adventures

Waiheke Island



📍 150 Trig Hill Road, Onetangi, Waiheke Island 1081

☎ +64 9 372 5646

✉ book@ecozip.co.nz

🌐 www.ecozipadventures.co.nz



EcoZip is a multi award winning zipline and eco-tourism experience. Enjoy a breath-taking eco-adventure zipline on the beautiful, sub-tropical Waiheke Island.

A short ferry ride from Auckland, the island's idyllic location offers panoramic views and varied landscapes. In an Australasian first, EcoZip's three giant, dual ziplines allow you to zip side-by-side with a friend; making it the most uniquely social experience. Plus, you'll also enjoy a guided nature walk in a stunning swathe of ancient, pre-European forest and a scenic island mini-tour.

e-Ride Waiheke

Waiheke Island



📍 Ferry terminal at Matiatia Wharf, 6 Ocean View Road.

☎ +64 9 372 6060

✉ info@eridewaiheke.co.nz

🌐 eridewaiheke.co.nz



Discover Waiheke Island in style with eRide's self-guided e-bike rentals. Visitors can choose from a range of top-quality electric bikes for an unforgettable exploration, riding to famous beaches like Oneroa, Palm Beach, and Onetangi, and visiting award-winning wineries. Attentive service ensures a seamless day out for families and friends. Enhance the adventure with high-quality e-bikes, excellent gear, knowledgeable staff, and reliable support from a friendly team always ready to assist.

NEW!

Man O'War Vineyards

Waiheke Island

📍 725 Man O War Bay Road, Waiheke Island 1971

☎ 0800 626 6927

✉ experiences@manowar.co.nz

🌐 www.manowar.co.nz



A hidden gem at the north-eastern end of Waiheke Island. Conveniently accessible with direct ferry services from the city centre – the scenic journey is part of the allure.

Enjoy beachfront wine tasting and long lunches or immerse yourself in nature with Man O' War's Forest Flight zipline and ancient kauri forest walkway. Weave above and below the towering canopies with the breathtaking Hauraki Gulf as your backdrop.

Escape to the bay and make memories that will last a lifetime.

The Heke – Kitchen, Brewery and Distillery

Waiheke Island



📍 64 Onetangi Road, Waiheke Island

☎ +64 9 372 0020

✉ bookings@theheke.co.nz

🌐 www.theheke.co.nz



Visit a world-class, sustainable distillery and brewery on Waiheke Island. Guests can tour, taste, learn, and savour delicious menu items at The HEKE, home to New Zealand's finest whisky and craft beer, with gin options available for enthusiasts.

Explore the four acres of beautiful gardens featuring Māori art while learning how The HEKE creates whisky and beer and discovering significant local stories.

Plus, The HEKE's custom-built Golf Centre features two state-of-the-art golf simulator bays designed for undercover, all-weather play.

Auckland Zoo

Western Springs



📍 100 Motion Road, Western Springs, Auckland

☎ +64 9 360 3805

✉ reservations@aucklandzoo.co.nz

🌐 www.aucklandzoo.co.nz



Discover all of Aotearoa New Zealand at Auckland Zoo. Showcasing over 100 native plants and 60 native species, in six stunning habitats, Auckland Zoo is home to some of the rarest and most threatened wildlife – inviting us all to play a role as kaitiaki (guardians) for our taiao (natural environment). From the iconic kiwi and tuna, to tuatara and takahē, you'll walk away with a newfound appreciation for New Zealand's precious taonga (treasures). Auckland Zoo provides a hub to connect in nature together and encourage future generations to treasure and protect our natural world.

Great Journeys New Zealand

Across New Zealand



📍 Auckland Strand Railway Station, Ngaoho Place, Parnell, Auckland

☎ 0800 872 467

✉ bookings@greatjourneysnz.com

🌐 www.greatjourneysnz.com



Embark on a scenic 11-hour train journey, the Northern Explorer, covering 648km from Wellington to Auckland in New Zealand. Traverse the North Island's volcanic heart, passing through Tongariro National Park, a dual UNESCO World Heritage site. Experience the engineering feat of the Raurimu Spiral, pass towering viaducts, and marvel at cliffs draped in native bush. Journey through rural farmland, offering a peaceful and picturesque backdrop. They now bring a Scenic Plus dining experience to this journey – hosted in an exclusive carriage savouring regionally inspired food and beverages.

Great Journeys New Zealand also provide short break packages, guided tours, charters and events. Join them and explore the range of experiences on offer.

SEA LIFE Kelly Tarlton's Aquarium

Ōrākei



📍 23 Tamaki Drive, Ōrākei, Auckland 1071

✉ operations@kellytarltons.co.nz

🌐 www.visitsealife.com/auckland



Take an underwater journey through the world-famous SEA LIFE Kelly Tarlton's, Auckland and discover a diverse collection of marine life up close.

Marvel the world's largest sub-Antarctic penguin colony display, encounter the world's largest species of stingray and explore NZ's largest collection of sharks. Journey through a unique Southern Ocean experience and be mesmerised at it's amazing live jellyfish display.

Experience the ocean from a whole new perspective with their immersive Virtual Reality experience. Choose from five different ocean and sea creature-themed experiences as you take a virtual journey below the surface.

For visitors who prefer a closer encounter, the aquarium offers thrilling experiences to snorkel in the Shark Cage, or the Penguin Passport, to get up close and personal with penguins.

Te Arai Links

Te Arai



110

📍 11 Te Ara Whenua, Miharo Kotiti, Tomarata 0974

☎ +64 9 883 4600

✉ reservations@tearai.com

🌐 <https://tearai.com>



Positioned alongside a pristine New Zealand coastline, Te Arai Links is a newly developed world-class golf destination. Boasting two pure links golf courses one designed by Bill Coore & Ben Crenshaw and the other by Tom Doak.

There are multiple accommodation options, including hotel suites, two bedroom cottages and four bedroom villas, all offering golf and ocean views. Dining options include Ric's clubhouse restaurant on the North Course and the Ocean fine dining restaurant will open in 2024. Golf aside, Te Arai Links has a list of activities on offer including massage and spa treatments, beach activities and local tours.

Westfield Newmarket

Newmarket

📍 277 Broadway, Newmarket 1023

☎ +64 9 978 9400

✉ newmarket@scentregroup.co.nz

🌐 www.westfield.co.nz/newmarket



Newmarket is exactly what its name suggests – a contemporary hub for shopping. Most of the stores are situated along Broadway, its busy thoroughfare, with Westfield Newmarket at one end and the cobbled laneways of Teed Street at the other.

Westfield Newmarket is a hub for shopping, fun and relaxation. The two-building mall rises five stories housing global luxury brands, high-street shops, department stores and just about everything in-between, with duty free shopping available for some retailers and a bookable personal styling service. While you're there visit the Rooftop on Broadway, Auckland's only open-air rooftop dining precinct, and experience world-class entertainment at Event Cinema's and Archie Brother's.

The centre is well connected to public transport and luggage storage is available for convenience.



T O U R S

Tours are a great way to discover Auckland, whether visiting some of our most popular attractions, or uncovering the region's hidden gems.

Ananda Tours

Waiheke Island



+64 9 372 7530

info@ananda.co.nz

www.ananda.co.nz



Ananda Tours is a Waiheke Island family-owned company that has been sharing the Island for 23 years. Using close partnerships and a highly knowledgeable team, Ananda Tours bring together a seamless experience from the moment you step foot on the Island to the moment you leave.

Ananda Tours offer a range of shared and private tours and packages and can customise tours. Ananda Black offer premium private and individually tailored tours and packages to suit discerning travellers using luxury Mercedes vehicles, helicopters, private charter yachts and aircraft.

Auckland & Beyond Tours

Greater Auckland Region

+64 22 047 4575

info@aucklandandbeyond.co.nz

www.aucklandandbeyond.co.nz



Auckland & Beyond Tours is a leading tour operator with over a decade of experience specialising in small-group and private tours throughout Auckland and its surrounding regions.

Committed to delivering high-quality, personalised travel experiences, the company showcases the stunning beauty, rich cultural heritage, and unique attractions of Auckland and the North Island.

Curated tours highlight iconic destinations such as Waiheke Island, Muriwai Beach, Matakana Village, and further afield to the Hobbiton Movie Set, Waitomo Glow Worm Caves, Bay of Islands and Rotorua's Geothermal Valley.

With a fleet of luxurious Mercedes vehicles, Auckland & Beyond Tours ensures a comfortable journey. Their expert guides provide valuable insights into New Zealand's history and landscapes, creating unforgettable memories for every traveller.

Aucky Walky Tours

Auckland City Centre



+64 21 378 267

hello@auckywalky.co.nz

www.auckywalky.co.nz



Regarded as one of New Zealand's best first day experiences, Aucky Walky Tours help visitors find their feet in Auckland with small-group and private walking tours. The hidden lanes, local legends and best places to eat, shop and go.

Tours include: Hello Auckland tour, Taste Auckland Food tour, Artwalk Auckland tour and a tour combining the walking Hello Auckland tour with an afternoon electric bike tour.

Bush and Beach

Across Auckland



+64 9 837 14130

info@bushandbeach.co.nz

www.bushandbeach.co.nz



Bush and Beach is Auckland's premier small-group tour company and has been operating for 40 years. Multi-award-winning tours to lush rainforest and wild black sand beaches provide an experience of spectacular natural worlds. Entertaining guides provide an interactive experience for FITs and groups.

Their diverse range of tours caters to small groups, featuring highlights such as the Auckland City Highlights tour and Kumeu Wine Country excursion. They take pride in their achievements, having been the inaugural winner of TECNZ's Small Business Operator of the Year award in 2016, a finalist in the 100% Pure NZ Experience Awards in 2019 and 2021, and certified as CarboNZero.

Bush and Beach is a leader in regenerative Tourism.

NEW!

GoGuided

Auckland City Centre

+64 9 930 7600

contact@goguided.nz

www.goguided.nz



GoGuided provides visitors a smart way to discover Auckland. From the comfort of an environmentally friendly vehicle, and with the selection of pick-up location, guests will enjoy an enriching multilingual technology-driven commentary experience which covers the city's top attractions as well its history, culture and way of life.

Social Nature Movement

Auckland wide



+64 27 501 1639

support@snm.nz

socialnaturemovement.nz



Specialising in immersive outdoor experiences, Social Nature Movement connects people with nature through guided adventures and educational programs. With a diverse range of activities, participants can embark on exhilarating multi-day hiking and kayaking expeditions or engage in hands-on workshops and environmental education initiatives. Each experience is crafted to inspire a deeper appreciation for the natural world.

Committed to sustainability, the team empowers individuals to explore, learn, and develop skills that foster environmental stewardship and personal growth.

Terra and Tide

Waiheke Island



📍 44 Hekerua Road, Oneroa, Waiheke Island 1081

☎ +64 21 669 722

✉ hello@terraandtide.co.nz

🌐 <https://terraandtide.co.nz>



Explore the natural wonders of Waiheke Island and the Hauraki Gulf with award winning Terra and Tide's intimate group touring, walking and sailing adventures that are good for the planet. Terra and Tide creates unique, customised, immersive experiences for independent, corporate, group and incentive clients through our expert team and wide range of partnerships.

On Waiheke, you can indulge in guided art, history and heritage and private personalised tours in our luxury Mercedes e-vans, or enjoy guided day walks and multi day adventures spanning headlands, bush, beaches, flora and fauna and vineyards.

Terra and Tide offers sailing adventures on their 41-foot catamaran, Pacific Star, for unparalleled experiences. Discover pest-free islands, partake in wildlife walks, and uncover secluded beaches and coves. Marvel at breathtaking vistas, diverse wildlife, lush bushland, and pristine beaches. Indulging in local wines and cuisine, guests enjoy tailored adventures guided by local experts.

The Big Foody Food Tours

Auckland City Centre



☎ +64 21 481 177

✉ elle@thebigfoody.com

🌐 www.thebigfoody.com



Listed as one of the top ten experiences for foodies in the world by The Sydney Morning Herald, The Big Foody Food Tours are designed to showcase Tāmaki Makaurau Auckland through the eyes of a local. The tours are a delightful way to learn, taste, smell and experience the region. Each tour is led by a dedicated food lover who takes pride in showing off local hidden gems and introducing guests to artisans, brewers, vineyard owners and producers sharing their history and stories. Daily scheduled tours include: The Tastebud Tour, A Place at our Table and Flavours of our City.

Private group food and wine tours can also be curated for an unforgettable experience.

TIME Unlimited Tours

Across Auckland



☎ +64 9 846 369

✉ info@newzealandtours.travel

🌐 www.newzealandtours.travel



TIME Unlimited Tours is one of New Zealand's most awarded family owned & operated tourism businesses. Founded by Neill and Ceillhe Sperath in 2005, it has become an iconic Luxury, Māori & Eco-tourism operator with a proven reputation to put their manuhiri (valued visitors) at the centre of the experience within Tāmaki Makaurau (Auckland) and throughout Aotearoa (NZ). Their luxury small group & private tours are known for exceptional service second to none.

Waiheke Wine Tours Ltd

Waiheke Island



+64 27 800 0298

info.waihekewinetours@gmail.com

<https://waihekewinetours70.rezdy.com/index>



Waiheke Wine Tours offers both shared and private tours that showcase the island's renowned vineyards. With extensive knowledge of local winemakers, they ensure an exceptional adventure for every guest. Visitors can enjoy craft beer, wine, and olive oil tastings, complemented by a delicious platter lunch at a renowned vineyard. The tours also include exploration of stunning beaches, breathtaking views, and charming villages, all guided by Waiheke's best. Arrive as a stranger and leave as family while experiencing the finest of Waiheke Island.



T R A N S P O R T

It's easy to get to and around Auckland. The region's many transport options cater to visitors of all types.

Air Chathams

Greater Auckland Region



☎ 0800 359 669

✉ nzreservations@airchathams.co.nz

🌐 www.airchathams.co.nz



Family-owned and operated, Air Chathams is the largest independent airline in New Zealand, renowned for its commitment to customer care.

The airline offers the fastest direct routes from Auckland to Whakatāne, Whanganui, and the Kāpiti Coast. Weekly flights to the Chatham Islands.

Air Chathams also provides charter services for corporate needs, packages, and events, ensuring a tailored travel experience for all.

Boss Black Ltd

Greater Auckland Region

☎ +64 27 559 3107

✉ info@bossblack.nz

🌐 www.bossblack.nz



Explore Boss Black's luxury chauffeur service with private rides in black Mercedes-Benz vehicles, featuring S Class Sedans, 12-seat Sprinters, and 7/8-seat Valentines. Services include intercity transfers, VIP experiences, business meetings, and conference and event transportation.

Fullers360

Auckland City Centre



📍 Ferry Terminal, 99 Quay Street, Auckland

☎ +64 9 367 9111

✉ enquiries@fullers.co.nz

🌐 www.fullers.co.nz



Fullers360 has been the leading cruise and ferry operator in Auckland for over 30 years and offers a range of cruises and tours around Auckland Harbour and the islands of the Hauraki Gulf Marine Park. Leisure trips include Rangitoto Island - Auckland's newest volcano, and Waheke Island - the island of wine.

Heletranz Helicopters

Greater Auckland Region



📍 234 Rosedale Road, Albany, Auckland

☎ +64 9 415 3550

✉ info@heletranz.co.nz

🌐 www.heletranz.co.nz



Recognised as Auckland's premier helicopter service, Heletranz offers an array of unforgettable experiences. From scenic heli transfers to delightful dining and exciting fishing adventures, Heletranz provides exclusive access to stunning locations across Auckland, Waiheke, Great Barrier Island, and beyond. Elevate your clients' travel experiences with Heletranz.

Highlighted tours include scenic flights over iconic landmarks such as the Sky Tower and volcanoes, while Waiheke options feature Heli-dine Staycations at award-winning wineries and luxury lodges.

Island Aviation

Greater Auckland Region



📍 171 Carsons Road, Waiheke Island 1971

☎ +64 9 390 1122 / +64 22 643 7440

✉ info@islandaviation.co.nz

🌐 https://islandaviation.co.nz



Island Aviation takes pride in connecting visitors to Tāmaki Makaurau and the Hauraki Gulf while championing conservation efforts. Their mission is to foster a deep connection between travelers and the region's natural wonders, especially islands home to Aotearoa, New Zealand's precious birds and wildlife.

From island hopping, to charter flights, and scenic tours, Island Aviation provides diverse and personalised experiences, allowing visitors to tailor their journey or choose from curated package deals that highlight the beauty of islands such as Waiheke and Great Barrier in the Hauraki Gulf.

SeaLink Travel Company

Greater Auckland Region



📍 56 Hamer St, Wynyard Quarter, Auckland

☎ +64 9 309 5900

✉ info@sealink.co.nz

🌐 www.sealink.co.nz



SeaLink offers scenic cruises to Waiheke Island and the secluded Great Barrier Island. Whether travellers are driving or walking, SeaLink provides convenient transportation options for unforgettable island adventures. Guests can enjoy the comfort of their ferries while taking in stunning views, making the most of their journey with access to various amenities onboard.

USEFUL INFORMATION



Time Zone

New Zealand Standard Time is 12 hours ahead of Greenwich Mean Time (GMT).



Driving

Drive on the left side of the road in New Zealand. All drivers, including visitors from other countries, must carry their licence or permit at all times when driving.



Electricity

240V, 50Hz, with Australian/New Zealand pattern three-pin sockets.



Currency

New Zealand dollars (\$) and cents (c). There are five notes (\$5, \$10, \$20, \$50, \$100) and five coins (10c, 20c, 50c, \$1, \$2).



Smoke-free policies

In New Zealand it is illegal to smoke in most indoor spaces, including workplaces, function venues, cinemas, pubs, restaurants and hospitality venues, as well as all public transport. Cigarettes cannot be sold to anyone under 18.



Daylight saving

Daylight saving runs from the end of September until early April, when the clocks advance by 1 hour, i.e. GMT +13 hours.

111

Emergency services

111 is the emergency number for Police, Fire and Ambulance.



Tipping and service charges

Tipping is not expected in New Zealand but visitors may wish to tip for special service or kindness.



Average temperatures

Temperatures range from 20° to 30° Celsius (60 to 86 degrees Fahrenheit) during the warmer seasons (November to March), and from 10° to 17° Celsius (50 to 63 degrees Fahrenheit) in the cooler seasons (April to October).

Tāmaki Makaurau Auckland



E tourismtrade@aucklandnz.com

Find out more

Website

Asset Library

Travel sellers Facebook group

