



**What's New in
Tāmaki Makaurau Auckland**

March 2024



Accommodation: New & In-development

Grand Millennium Auckland – Ballroom Makeover

Now available



- Grand Millennium Auckland has unveiled its ballroom transformation following an extensive makeover that features a custom-designed lighting sculpture called the Sky Garden by James Russ Studio, featuring over a million meticulously hand-assembled LED lights.
- The Grand Ballroom accommodates up to 1,000 guests for cocktails, 800 delegates for conferences, or 550 guests for banquets, alongside the option to divide the space into four sections for smaller gatherings.
- The Grand Ballroom refresh forms part of Grand Millennium Auckland's extensive \$30million makeover across food and beverage venues, meetings and events spaces and guest rooms.
- For enquiries, email meetings@millenniumhotels.co.nz

 [Grand Millennium Auckland](#)

 71 Mayoral Drive, Cnr Vincent Street, Auckland

aucklandnz.com

Hotel Grand Chancellor

Opening Q4 2024



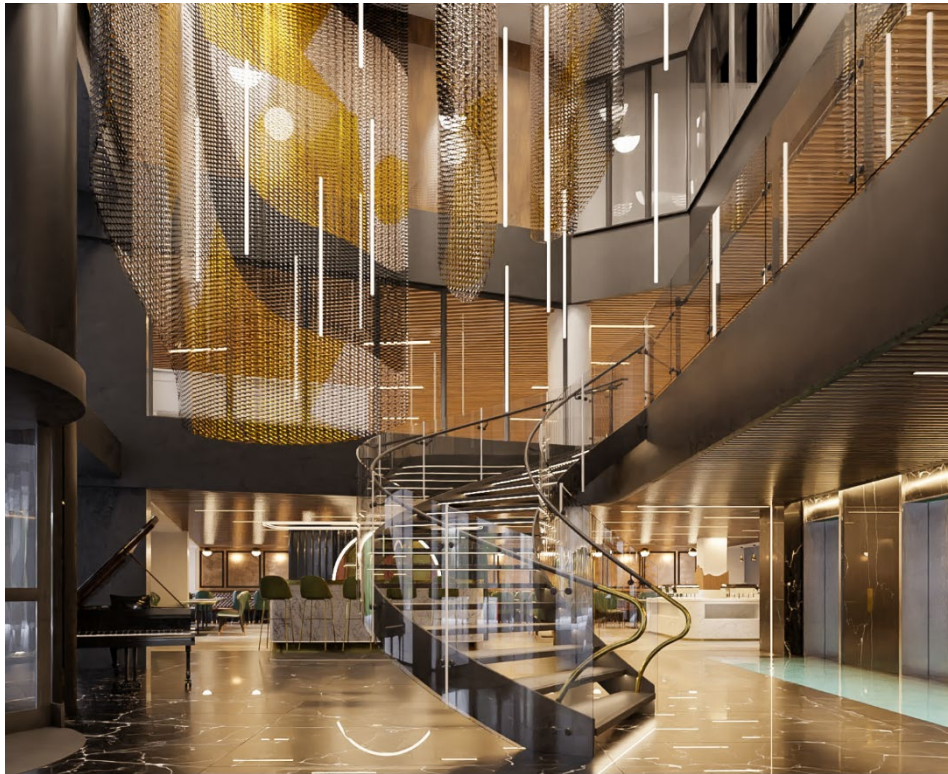
- A 12-storey newbuild Hotel Grand Chancellor is being constructed on a site that is across the road from the NZ International Convention Centre on Wellesley Street West in Auckland.
- The 191 premium guest room hotel will feature a forest and native plant interior setup, including a ground floor café and first floor restaurant.



74-80 Wellesley Street West Auckland Central, Auckland

Soho Hotel Auckland

Opening 2024



- Set alongside Mount Roskill/Puketāpapa, Soho Hotel Auckland is a 10-minute drive to Auckland's city centre and just 20 minutes from the airport. The hotel draws inspiration from art deco, seamlessly fused with contemporary comfort for the ultimate urban escape.
- Extensive dining options are available, complemented by a premium Day Spa and rooftop bar. 126 rooms are available, all featuring contemporary furnishings.
- Spacious conference and events facilities cater for up to 200 delegates, including a large conference room complemented by a seminar room and two smaller meeting rooms offering flexible breakout spaces.
- Capstone Group



[Soho Hotel Auckland](#)



180 Stoddard Road, Mount Roskill, Auckland 1041

aucklandnz.com

Abstract Hotel

Opened February 2024



- Located on upper Queen Street in central Auckland, Abstract is the city's freshest new vibe, blending a hotel and residences with 273 self-contained rooms and apartment studios.
- In addition to on-site management, you'll enjoy 24-hour concierge services, access to co-working spaces, a club lounge, the Winter garden, a private bar, restaurant, spa, an on-site gym, and the very best in connectivity.
- Capstone Group.



[Abstract Hotel](#)



6-8 Upper Queen Street, Auckland, New Zealand

The InterContinental Auckland

Opened January 2024



- Situated in a prime location on Auckland’s waterfront at 1 Queen Street, the InterContinental Auckland spans floors six to 11 of the Green Star building. Floors 12 to 20, meanwhile, will be dedicated to office space.
- A rooftop bar on level 21 offers impressive waterfront views.
- Curated by chef Gareth Stewart, the hotel’s flagship restaurant and bar – Advieh, features Middle Eastern flavours, nicely blended in the sophisticated and chic setting.
- The hotel features 139 guestrooms and a range of luxury facilities. Guests can enjoy uninterrupted views of Waitematā Harbour and have immediate access to world-class retail and leisure options.



[InterContinental Auckland](https://www.intercontinental.com/auckland)



1 Queen Street Auckland 1010 New Zealand

aucklandnz.com

Hotel Indigo

Opening 2024



Coming soon



Auckland CBD

aucklandnz.com

- Auckland will welcome New Zealand's first Hotel Indigo by IHG group to the city centre.
- Tāmaki Makaurau will set the backdrop for this boutique hotel, drawing inspiration from local artists for its design, service, amenities, food, and beverages.
- The 225-room hotel will be part of a mixed-use development in a coveted Auckland Central location. The new build development will be among Auckland's tallest buildings, maintaining the façade of the original historic building with a new world-class hotel blended elegantly around it.
- The hotel will feature its own all-day dining and bar, meeting space, and gym, and most hotel rooms will offer stunning views of the city and the iconic Viaduct Harbour.

Te Arikinui Pullman Auckland Airport Hotel

Opened December 2023.



- Te Arikinui Pullman Auckland Airport Hotel (Pullman Auckland Airport) is a new five-star, 311-room hotel providing a stunning gateway at the front door of Auckland International Airport.
- Designed by leading architects Warren & Mahoney, it is managed by the Accor Group. The hotel's exterior and interior design infuse distinctive cultural elements, drawing on the connection between land, sea, and sky.
- A stunning top-floor restaurant and bar offer spectacular views across the airport runway and out to the Manukau Heads – a culturally important route navigated by the original Tainui waka.



[Te Arikinui Pullman Auckland Airport Hotel](#)



37 Tom Pearce Drive, Auckland Airport, Auckland

Horizon by SkyCity

Opens mid 2024



- The new 5-star hotel will comprise 302 rooms over 11 floors and feature restaurants, a bar, and a gymnasium.
- Horizon Hotel is connected via an air-bridge to the upcoming New Zealand International Convention Centre (NZICC). This will be New Zealand's largest convention centre, with the capacity to cater to a small event for 20 to over 3,000 guests at one time for a dinner or theatre show.
- Alongside the Sky Tower, the SkyCity complex includes a 700-seat theatre, a convention centre, 12 bars and restaurants, 2 hotels, and a casino.



[Horizon by SkyCity](#)



85-93 Hobson Street, Auckland CBD, Auckland 1010

Sofitel Auckland Viaduct Harbour

Reopened on 1 September 2023



- A new chapter of boutique luxury, chic design, and pure indulgence unfolds in Auckland with Sofitel Auckland Viaduct Harbour's extensive refurbishment of the ground floor.
- The makeover seamlessly blends French art-de-vivre heritage with contemporary elegance, introducing three new authentic and lively culinary experiences that will leave guests in sheer awe.
- The hotel boasts 90 stunning luxurious guest rooms, complemented by four meeting and event spaces with a capacity for up to 130 seated guests. These spaces have also undergone a refresh in furnishings and décor, along with the introduction of brand-new AV and technology, catering to the needs of business groups.
- Accor Group



[Sofitel Auckland Viaduct Harbour](#)



21 Viaduct Harbour Avenue, Auckland CBD, Auckland 1010

aucklandnz.com





Auckland attractions and activities

Explore Group's Ferry to Man O' War Vineyard on Waiheke Island

From February 2024



- Explore Group launches a direct 90 minute ferry service from Auckland's viaduct to Man O' War wharf, providing easy access to the iconic Man O' War Vineyard on Waiheke Island.
- Located at the eastern end of the island Man O' War's Winery Tasting Room is the only one on Waiheke that's on the water and New Zealand's only beachfront tasting experience.
- With return trip prices at \$95 per adult and \$50 per child, alongside reservations recommended for tastings and dining, guests can easily plan and book their Man O' War experience directly through the vineyard.



[Explore Group – Man O' War Ferry Service](#)



Explore Booking Kiosk Quay Street, Viaduct, Auckland

Te Arai Links – The South & North Course

Now open



- Te Arai Links is Auckland’s latest world-class golf destination and country club. It is a scenic 90-minute drive from Auckland's city centre or a 25-minute helicopter ride.
- Te Arai Links boasts two golf courses, each offering different perspectives of the stunning sea views and islands beyond.
- Both courses are now open. The North Course, created by Tom Doak of Renaissance Golf Design, opened in October 2023.
- Ric’s Restaurant is open to the public, with an additional dining option, Ocean Restaurant, set to open in 2024.
- See website for the latest media releases.

 [Te Arai Links](#)

 11 Te Ara Whenua Miharo Kotiti, Tomarata 0974

aucklandnz.com

Wētā Workshop Unleashed

Non-English Guided Tours & Translation Services



Daily Mandarin Tours – December 1st onwards

- From December, there will be bookable daily afternoon departures in Mandarin.

Daily Hands-on Workshop – November 1st onwards

Translation Services:

- Audio and visual QR code/App (English, French, Mandarin, and Japanese). Simply scan a QR code on entry and select the preferred language, with the translations providing a brief overview of each room, giving context for the English-speaking guide.
- Subtitles on screens (English, French, Mandarin, and Japanese)..
- Jeff is Bilingual (English and Mandarin). The next language that Jeff is learning is Hindi.



[Wētā Workshop Unleashed](https://www.aucklandnz.com/weta-workshop-unleashed)



Convention Centre Level 5/88 Federal Street, Auckland
CBD, Auckland 1010

Fullers360 Waiheke Reserve

New visitor ferry service, available yearly from November to April.



- Introducing a new bookable return ferry service from downtown Auckland to Waiheke Island.
- Enjoy the convenience of advance booking on this capacity-managed service.
- Waiheke Reserve is the perfect choice for those with fixed travel schedules but is also flexible – passengers can choose to return to Auckland on the same day or up to three weeks after their arrival on the island.
- The return ferry is priced at NZD 95.
- The Waiheke Reserve service operates from November through April on specific days*. For more information, please visit the website.



[Waiheke Reserve](#)

Allpress Olive Groves

Now open



[Allpress Olive Groves](https://www.allpressolivegroves.co.nz)



56 Church Bay Road, Church Bay, Waiheke Island 1971

[aucklandnz.com](https://www.aucklandnz.com)

Michael Allpress, after a successful 33-year journey with Allpress Espresso, founded Allpress Olive Groves in 2021, encompassing Rangihoua Estate and number29.

- **Tasting room & retail store of award-winning olive oil:** Produces world-class extra virgin olive oils under three exceptional brands - Allpress, number29, and Rangihoua Estate.
- **Mill Tours:** Insightful tours for visitors, showcasing the olive oil production process.
- **Event spaces** are available.
- **Holiday Homes:** Features a collection of four idyllic holiday homes located within olive groves, providing a unique island escape.
- **Allpress Bistro (Coming Soon):** The Allpress Bistro, set to open in early 2025, will serve as a new destination for both locals and tourists.

Te Wao Nui Guided Tour – Auckland Zoo

Tours now available



 [Auckland Zoo – Te Wao Nui](#)

 Motions Rd, Western Springs, Auckland 1022

aucklandnz.com

- Discover all of Aotearoa New Zealand at Auckland Zoo.
- Showcasing over 100 native plants and 60 native species across six stunning habitats, Te Wao Nui is home to some of the rarest and most threatened wildlife – inviting us all to play a role as kaitiaki (guardians) for our taiao (natural environment).
- From the iconic kiwi to tuna, tuatara, and takahē, you’ll walk away with a newfound appreciation for New Zealand’s precious taonga.
- Te Wao Nui provides a hub to connect with nature together and encourages future generations to treasure and protect our natural world.
- **Opening hours:**
 - 9:30am - 4:30pm (Last entry at 3:30pm)
 - Open every day except Christmas



Kiwi Connect – Auckland & Waiheke Tours

Now a fully electric 6-seater fleet



- Personalised electric-vehicle adventure on both Waiheke Island and in Auckland City. The vehicles are 100% electric, with experienced driver/guides showcasing the destinations.
- Auckland tours include a 2-hour Auckland Classic Tour and a 3.5-hour Auckland Volcano Tour.
- Waiheke Island tours range from a brief 1.5-hour Mini Waiheke Tour to a 5-hour Far End Tour, allowing you to discover this secluded part of the island. Additional options include a 3.5-hour sunset tour with a wine tasting at the stunning Mudbrick Vineyard and Casita Miro. End the day at beautiful Batch Winery - the highest elevated winery on Waiheke. Relax and enjoy a delicious dinner with spectacular sunset views.
- **Opening hours:**
 - Daily tour available from 4pm – 7.30pm. Tours are available daily. 6 maximum passengers per van.



[Kiwi Connect](https://www.kiwiconnect.co.nz)

Rotoroa Island – Explore Group

From September 2023



- Explore Group offers a new ferry service to Rotoroa Island in the Hauraki Gulf, providing a scenic 75-minute cruise each way.
- Rotoroa Island, predator-free since 2014, is a haven for native birds and wildlife, boasting an award-winning museum and heritage buildings that allow visitors to discover its unique history.
- Visitors can explore the island on foot, spot iconic native species, enjoy sandy bays for swimming and snorkelling, and utilize facilities, although there is no café available. Holiday home accommodations are also an option for extended stays.



[Explore Group – Explore Rotoroa Island](#)

Island Direct – Waiheke Island's Newest Ferry Service

From mid-November 2023



- Island Direct provides a family-owned alternative with a direct ferry service, departing from Pier 13/14, Downtown Ferry Terminal, Auckland, and Pier 3, Matiatia Ferry Terminal, Waiheke Island.
- The service includes 18 crossings a day on a 50-passenger vessel.
- The cost is NZD50 for adult return tickets and NZD25 for children return tickets (5-12 years old).



[Island Direct](#)



Pier 13, Downtown Ferry Terminal, Auckland

aucklandnz.com

A top-down view of a restaurant table with various dishes. In the center, a hand uses chopsticks to pick up a dumpling from a bamboo steamer basket. To the left, a plate of dumplings is garnished with green onions. Above it, a plate of sliced cucumbers and shredded carrots sits next to a small bowl of orange sauce. To the right, a roasted duck is served on a black tray, garnished with green onions. Further right, a plate of green beans and broccoli is visible. In the bottom right, a hand holds a drink with a straw and fruit. The table is made of dark wood, and a teal banner is overlaid across the middle.

Restaurant & bar openings

Ember and The Aviary

Opened March 2024.



- Grand Millennium Auckland is delighted to announce the opening of two new Paul Izzard designed dining venues - Ember and The Aviary.
- Ember, is a relaxed and approachable bistro that draws inspiration from a multitude of cuisine styles.
- With the option of booking an exclusive space for groups, Ember is an easy 5-minute walk to Auckland's theatre district and is perfectly placed for pre-and post-theatre food and drinks.
- Positioned inside the light-spilling grand atrium, The Aviary Cocktail Bar introduces patrons to a world of elegance and international people watching. Positioned inside the light-spilling, grand atrium



[Ember](#) [The Aviary](#)



Grand Millennium Hotel, 71 Mayoral Drive, Auckland

Darling on Drake

Opened December 2023.



- Set on a sprawling site on the edge of Victoria Park boasting views out to Darling's terrace and Victoria Park beyond.
- With delicious food, a sprawling terrace and some of the best cocktails in town, Darling on Drake is the new restaurant and bar to have on your radar.
- The second bar is on the deck which boasts the biggest outdoor terrace in Central Auckland.



[Darling on Drake](#)



27 Drake Street, Auckland

Rocketman

Opened October 2023.



- More than a typical bar, Rocketman is a destination. Its eclectic interiors, tasty cocktails and friendly service promise an experience that is as unlike anything else in this city.
- Hidden behind a discreet cupboard door lies Kitty's Karaoke Parlour, a secret enclave where patrons can unleash their inner rockstar amidst a backdrop of pink ruffles and neon lights. Bookings available for 1 or 2 hour sessions. Best suited to groups of 2-8 people.
- Available for special events, hosting groups of 20-100 people. Their private space hosts 20-30 people.

 [Rocketman](#)

 240 Customs Street East, Auckland

Anise at The French Café

(The French café is formerly known as Sid at the French Café). Opening 2 February 2024.



- Multi-award-winning restaurateurs and owners of Cassia by SkyCity, Sid and Chand Sahrawat, will revert the name Sid at the French Café to its former name, The French Café.
- The venue's main dining area will house a new restaurant called Anise, a modern pan Asian eatery with menu inspired by restaurants such as Momofuku in New York and Supernormal in Melbourne.
- Anise will feature a reception and bar area, the two dining areas, the private dining room, and a private dining wine cellar, all wrapped around an old French quarter courtyard, complete with a fireplace, herb garden and al fresco dining.
- Anise Tuesday to Saturday for dinner and lunch on Saturdays.
- The French Café is open Thursday to Saturday for dinner and lunch on Saturdays.

 [Anise](#)

 210 Symonds Street, Eden Terrace, Auckland 1010

The Grill by SkyCity

Re-opening mid 2024



- Led by Executive Chef Touvai Poloniati, The Grill is returning to the SkyCity Precinct, with a new home in the Horizon by SkyCity, Auckland's newest 5-star hotel.
- The brand-new location, with spacious outdoor courtyard will be the must-visit destination for those looking to indulge in the best of New Zealand beef, lamb and seafood, cooked over our Montague grill to perfection.
- Private dining room is available for up to 12 guests, showcasing a bespoke menu.



[The Grill](#)



Horizon by SkyCity, 85 Hobson Street, Auckland

aucklandnz.com

The Nightcar

Opened January 2024



- The Nightcar is Auckland's newest underground lounge bar and Restaurant, bringing a luxurious nightclub setting with the modern Chinese inspired menu.
- The Nightcar, inspired by owner Daren Zhou's global experiences, blends elements from Beijing, London, and his background in video, art direction, and hospitality. Returning to New Zealand, Zhou aims to elevate Auckland's nightlife with a sophisticated, international flair at his new venue.

Opening hours:

- Tuesday & Wednesday — 5pm until 11pm
- Thursday — 5pm until 1am
- Friday & Saturday — 5pm until 3am



[The Nightcar](#)



Underground, 44 Queen Street, central Auckland

aucklandnz.com

Tala

Opened December 2023



- TALA – a new offering from chef Henry Onesemo that showcases traditional Samoan flavours through an innovative, modern dining experience.
- The Samoan word “tala” means “story” or “tale”. For Henry Onesemo, TALA is where he tells his own tales of Samoa through familiar ingredients presented with a fresh twist.
- 28 seat main dining room, along with front-row kitchen counter seating for an immersive dining experience, with personalized tasting menus reflecting different elements of Samoan cuisine.
- Terrace area transforms into Inu, a casual bar serving cocktails and Tala kitchen food during summer months.



[Tala](#)



235 Parnell Road, Parnell, Auckland 1052

Gilt Brasserie

Now open



- Located on the corner of Chancery Street and O’Connell Street in Auckland's city centre, Gilt Brasserie at Chancery Chambers is owned by high-profile chef Josh Emett and his wife, Helen Emett, who are also behind the success of Onslow and The Oyster Inn.
- Gilt Brasserie is a bustling, vibrant 130-seater restaurant where Josh and his team serve simple, unfussy food featuring sophisticated European fare. The dishes are paired with old-world wines and handcrafted cocktails.



[Gilt Brasserie](#)



2 Chancery Street, Chambers, Auckland 1010

Metita by SkyCity

Opened October 2023



- Metita by SkyCity, led by the renowned chef Michael Meredith, brings a fresh exploration of Pacific cuisine. Sharing his Pacific heritage, methods from the past and present are curated and celebrated with a menu crafted to highlight sustainably caught seafood and fresh, locally sourced ingredients.
- Private dining space is available.
- Located at The Grand by SkyCity, in the space formerly housed by Gusto at The Grand.



[Metita](#)



90 Federal Street, Auckland

Resources



Useful links

- [Auckland Asset Library image and digital library](#)
- [Auckland Tourism Trade](#)
- [Visit Auckland information](#)

Contact

Fiona Doyle
Business Development Manager
Australia, North America, UK & Europe
E: fiona.doyle@aucklandnz.com

Contact

Yamile Hernandez
Business Development Manager
Eastern Market
E: Yamile.Hernandez@aucklandnz.com



Ngā mihi